

REFERENCE MATERIAL CERTIFICATE

Reference Material

This certificate is designed in accordance with ISO Guide 31. This reference material (RM) was designed, produced and verified in accordance with a registered quality management system ISO 9001. All measurements were performed according to ISO/IEC 17025 by a DAkkS accredited laboratory (D-PL-19883-01-00).

Product Name

3-Amino-2,6-dimethylphenol

Product Code  
DRE-C10202030

Lot Number  
1013539

CAS No.  
6994-64-5

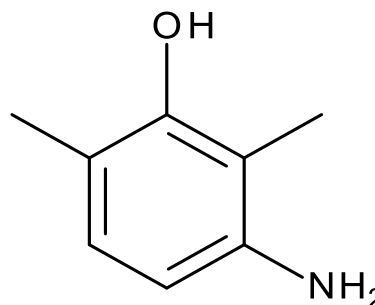
Format  
Neat

Mol. Weight  
137.18

Expiry Date  
29 Jul 2025

Mol. Formula  
C<sub>8</sub>H<sub>11</sub>NO

Storage Temp  
20°C ± 4°C



**CERTIFIED**

Purity  
94.0% (g/g)

**CERTIFIED**

Expanded Uncertainty (U)  
2.0% (g/g)

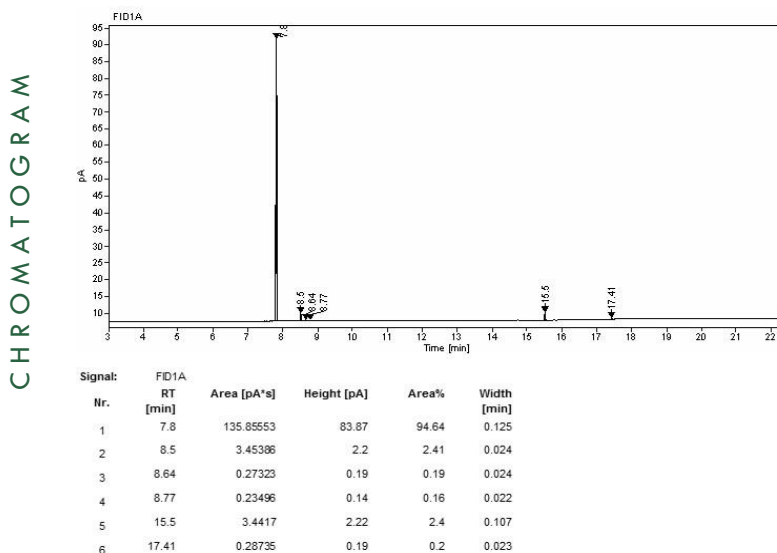
Uncertainty

The certified value(s) and uncertainty(ies) are determined in accordance with EURACHEM/CITAC Guide for "Quantifying Uncertainty in Analytical Measurement, 3rd edition", with an 95% confidence level (k=2). Uncertainty is based on the Total Combined Uncertainty, including uncertainties of characterisation and stability testing. Stability values are based on real evidence opposed to simulation.

The producer certifies that this reference material meets the specification stated in this certificate until the expiry date, provided it is stored unopened at the recommended temperature herein. Product warranties for this reference material are set out in the terms and conditions of purchase.

CERTIFIED BY		CERTIFIED ON			RM Release
Dr. K. Wörmann		29 Jul 2019			

## REFERENCE MATERIAL CERTIFICATE

**Instrument**

GC/FID

**Detection**

FID

**Column**

Optima-5MS, 0.25 µm, 0.25 mm

**Method Details**

Initial Temp: 120°C / 4 min, End Temp: 320°C / 5 min, Gradient: 15°C/min

**Inj.-Vol.**

1.0 µL

**Flow**

1 mL/min

**Method of Characterisation**

Purity = 100% - Assay impurities – Water content (KF)

**Method of Identification**

EA, NMR, RT, IR, MS

**Batch Information**

Water Content: 0.6% (g/g) by Karl-Fischer-Titration (U(exp) = 0.2% (g/g)).

**Intended Use**

This RM is intended for use in a laboratory as a calibration and quality control standard or in method development for analytical techniques.

**Safety**

Proper precautions should be observed while handling. See Safety Data Sheet.

**Traceability**

The balances used for gravimetric measurements are calibrated with weights traceable to the national

standards (DKD). The calibration of the balances is verified daily internally and annually by an external accredited calibration service. Chromatographic methods are traceable to the International System of Units (SI).

**Storage**

The RM should be stored in the original sealed container at the indicated temperature.

**Instructions for use**

It is recommended to use 1 mg as the minimum sample size and if less material is used, to increase the certified uncertainty by a factor of two for half sample and four for a quarter of sample. If storage after opening is necessary, the RM should be tightly closed and kept from light and moisture. If the RM was in a sealed ampoule, it should be transferred to a vial with minimum head space. Visit the support section of our website [lgcstandards.com](http://lgcstandards.com) for a series of Dr. Ehrenstorfer Tech Tip videos and frequently asked questions.

LGC Labor GmbH

Bgm.-Schlosser-Straße 6A

86199 Augsburg, Germany

T | +49 821 906080

F | +49 821 9060888

E | [dr.ehrenstorfer@lgcgroup.com](mailto:dr.ehrenstorfer@lgcgroup.com)