

Gravimetric Certificate



Product Identification

20834900 1-Methylantracene
Formula C₁₅H₁₂
Mol.Weight 192.26
CAS No. 610-48-0

Expiry Date 28.08.2022
Lot Number 752235CY
Store at 20°C in the dark

Please note: The expiry date is valid under recommended storage conditions only.

Gravimetric Data				
Product Name		Conc. (mg/l)	Purity %	Weight (mg)
1-Methylantracene		10.000	97.8	3.276
Solvent Information				
Solvent	Lot No.	Exact Quantity (ml)		
Cyclohexane	I09341172	320.00		
Traceability Data				
20834900 170609	neat product			
20834900 752235CY	10.000 mg/l			
Analytical Data				
Detection: HPLC/DAD	Method Details:			
Column: ReproSil 100 C18 5µ 250x3	Acetonitrile:H ₂ O 9:1			
Inj.-Vol.: 10.00 µl				
Flow: 1.0 ml/min				
Ret.-Time: 3.04 min.				
Identity check RT				
Comment Property value was determined by gravimetric measurements and confirmed by peak area comparison.				
The uncertainty/tolerance of this standard is +/- 2.0 %, calculated in accordance with the EURACHEM/CITAC Guide - Quantifying Uncertainty in Analytical Measurement - Second Edition. The uncertainty given is the expanded combined uncertainty and represents an estimated standard deviation equal to the positive square root of the total variance of the uncertainty of components. The expanded uncertainty is U which is U _c (y)*K, where K is the coverage factor at the 95% confidence level (K=2). The expanded uncertainty is based on the combination of uncertainties associated with each individual operation involved in the preparation of this product.				

Certified on 28.08.2018

by D. Schmid

Schmid D.

The Laboratory LGC Labor GmbH is accredited by DAkkS as indicated by the Accreditation Number D-RM-19883-01 & D-PL-19883-01 has shown competence based on ISO Guide 34:2009 with relevant parts of DIN EN ISO/IEC 17025:2005 for production of certified reference materials in form of organic pure substances and in form of single and multi-component solutions organic pure substances.

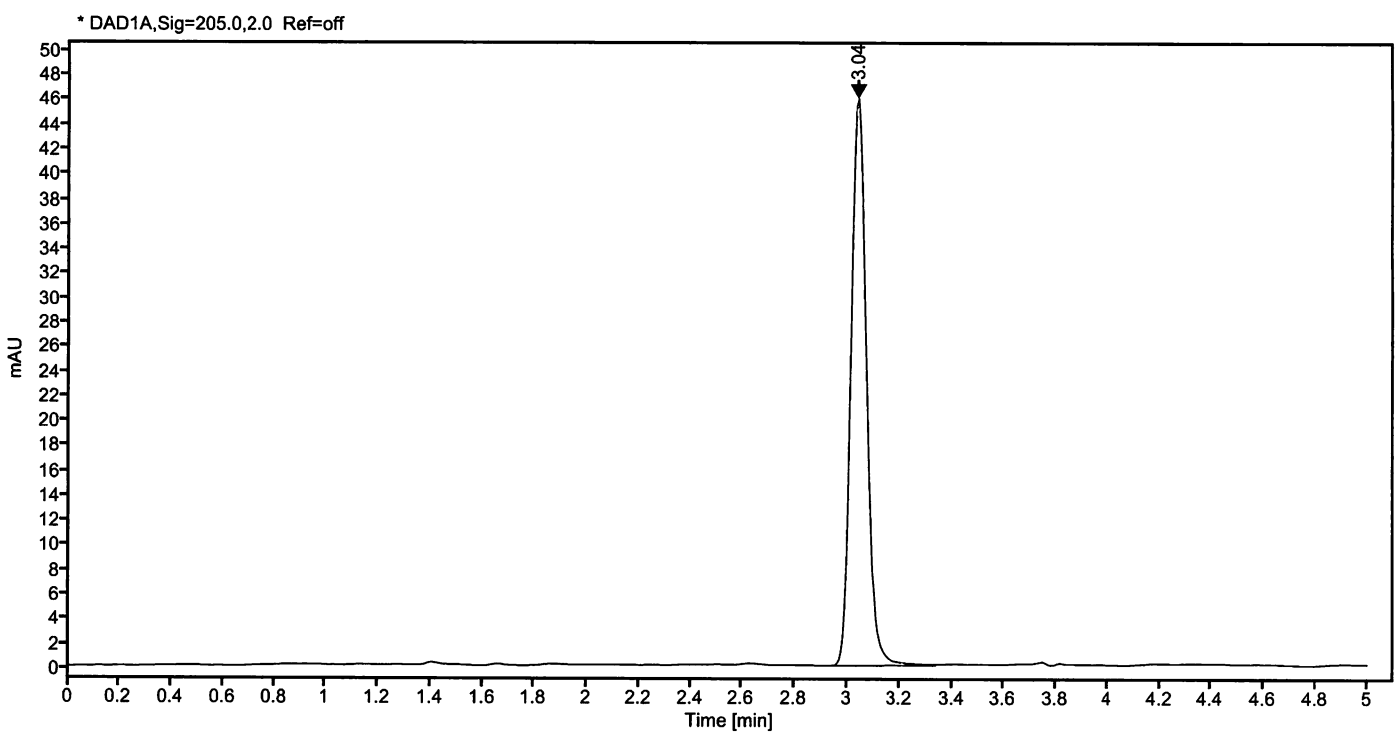
LGC Labor GmbH · Bgm.-Schlosser-Str. 6 A · 86199 Augsburg · Germany
Phone +49 821 906080 · Fax +49 821 9060888 · augsburg.inquiry@lgcgroup.com
The warranty for this product is limited to the purchasing price of this product.

01.08.18
ML

Data file: 20834900-22-r001.dx
Sample name: 752235CY
Inj. volume [µl]: 10.0
Acq. method: 91K.amx

Instrument: DAD3
Sequence Name: 16072018-K
Injection date: 7/17/2018 12:08:40 AM
Location: 83

Sample Description 1-Methylanthracene



Signal: * DAD1A,Sig=205.0,2.0 Ref=off

Nr.	RT [min]	Area	Height	Area%
1	3.04	187.45689	45.90	100.00
	Sum	187.46		

Schmid D