

# Certificate of Analysis




## Product Identification

11530100 Chlorotoluron D6 (N,N-dimethyl D6)  
CA N'-(3-chloro-4-methylphenyl)-N,N-dimethyl(D6)urea  
IUPAC 3-(3-chloro-p-tolyl)-1,1-dimethyl(D6)urea  
Formula C10H7CIN2OD6  
Mol.Weight 218.7  
CAS No. 1219803-48-1

Expiry Date 09.03.2024  
Lot Number 170072  
Store at 20 °C ±4 °C

Please note: The expiry date is valid under recommended storage conditions only.

Toxicological Data	Physical Data
 R Code 40-53-62 S Code 39-60-61 LD50 (Rats female/male in mg/kg) N/A	Phase crystalline solid Color colourless Melt.Range 149,6 °C Vapour pressure N/A at °C Solubility in water N/A g/l at °C Boiling Range (lit.)
<b>Analytical Data</b> Detection: HPLC/DAD Column: ReproSil 100 C18 5µ 250x3 Inj.-Vol.: 10.00 µl Flow: 0.5 ml/min Ret.-Time: <b>24.50 min.</b>	Method Details: Eluent A: Acetonitrile:H2O 1:9 for 2 min Eluent B: Acetonitrile 100% for 5 min Eluent A -> Eluent B: 45 min
Identity: RT, UV, MS, EA, NMR Comment Chemical purity: 99.4% Isotopic purity: 99.7% (98.4%D6, 1.6%D5)	
Water Content 0.1 % Det. Purity 99.1 %	Determined by Karl-Fischer Titration Tolerance/Uncertainty +/- 1.0 %
The uncertainty/tolerance of this standard is calculated in accordance with the EURACHEM/CITAC Guide - Quantifying Uncertainty in Analytical Measurement - Second Edition. The uncertainty given is the expanded combined uncertainty and represents an estimated standard deviation equal to the positive square root of the total variance of the uncertainty of components. The expanded uncertainty is $U$ which is $U_c(y) \cdot K$ , where $K$ is the coverage factor at the 95% confidence level ( $K=2$ ). The expanded uncertainty is based on the combination of uncertainties associated with each individual operation involved in the preparation of this product.	

Certified on 09.03.2018

by M. Beck

The Laboratory LGC Labor GmbH is accredited by DAkkS as indicated by the Accreditation Number D-RM-19883-01 & D-PL-19883-01 has shown competence based on ISO Guide 34:2009 with relevant parts of DIN EN ISO/IEC 17025:2005 for production of certified reference materials in form of organic pure substances and in form of single and multi-component solutions organic pure substances.

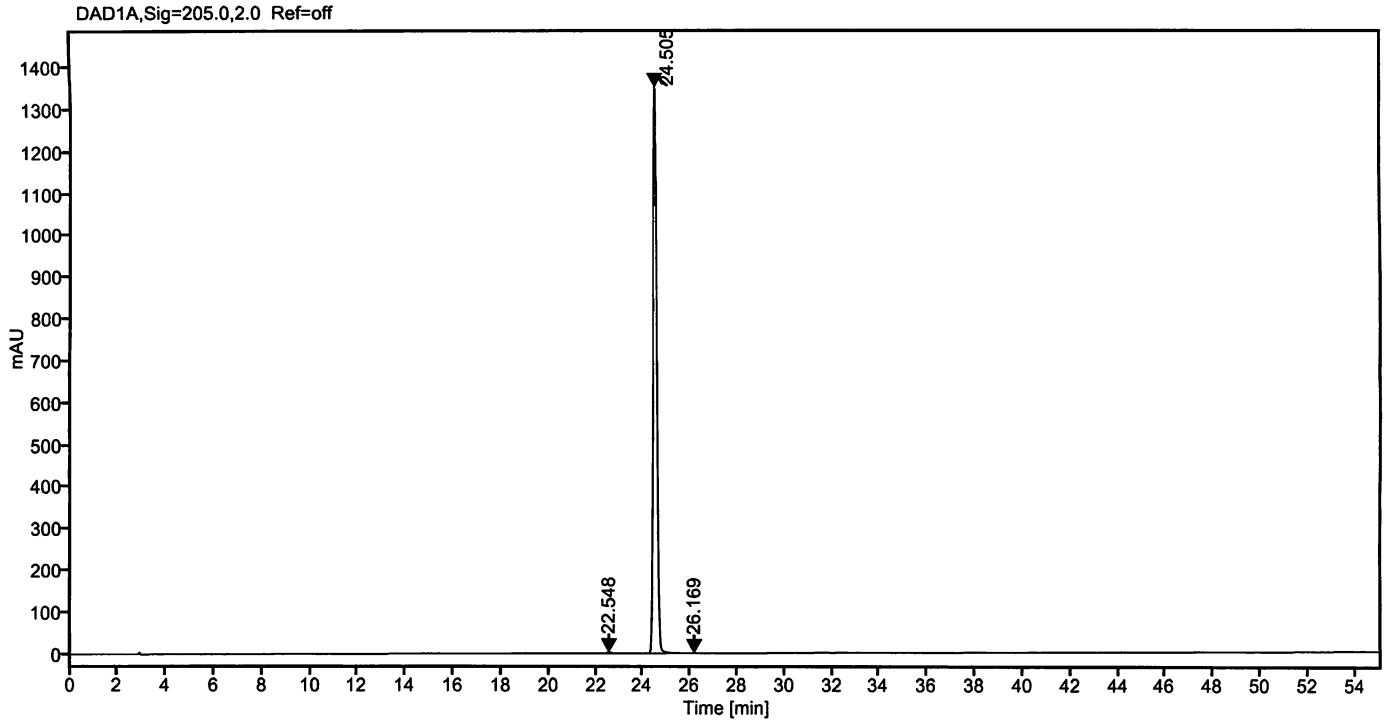
LGC Labor GmbH · Bgm.-Schlosser-Str. 6 A · 86199 Augsburg · Germany  
Phone +49 821 906080 · Fax +49 821 9060888 · augsburg.inquiry@lgcgroup.com  
The warranty for this product is limited to the purchasing price of this product.

1327

Data file: 11530100 -06-r001.dx  
Sample name: 80208AL 170072  
Inj. volume [µl]: 10.0  
Acq. method: Gradient\_10-100.amx

Instrument: DAD3  
Sequence Name: 09022018-Gradient  
Injection date: 2/10/2018 6:46:41 AM  
Location: 27

Sample Description Chlorotoluron D6 (N,N-dimethyl D6)



Signal: DAD1A, Sig=205.0, 2.0 Ref=off

Nr.	RT [min]	Area	Height	Area%
1	22.548	33.18621	3.32	0.23
2	24.505	14326.25104	1351.72	99.69
3	26.169	11.67948	0.79	0.08
	Sum	14371.12		

*M. Beck*