

REFERENCE MATERIAL CERTIFICATE

Reference Material

This certificate is designed in accordance with ISO Guide 31. This reference material (RM) was designed, produced and verified in accordance with a registered quality management system ISO 9001. All measurements were performed according to ISO/IEC 17025 by a DAkkS accredited laboratory (D-PL-19883-01-00).

Product Name

Bis-(2-chloro-1-methylethyl) ether 2000 µg/mL
in Methanol

Product Code
DRE-YA10651700ME

Lot Number
1069359ME

CAS No.
108-60-1

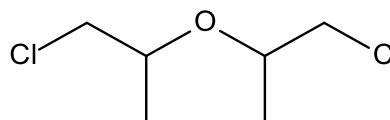
Format
Solution

Mol. Weight
171.06

Expiry Date
29 May 2025

Mol. Formula
C₆H₁₂Cl₂O

Storage Temp
20°C ± 4°C



<p>CERTIFIED</p> <p>Concentration 2000.0 µg/mL</p>	<p>CERTIFIED</p> <p>Expanded Uncertainty (U) 200.0 µg/mL</p>
---	---

Uncertainty

The certified value(s) and uncertainty(ies) are determined in accordance with EURACHEM/CITAC Guide for "Quantifying Uncertainty in Analytical Measurement, 3rd edition", with an 95% confidence level (k=2). Uncertainty is based on the Total Combined Uncertainty, including uncertainties of characterisation and stability testing. Stability values are based on real evidence opposed to simulation.

The producer certifies that this reference material meets the specification stated in this certificate until the expiry date, provided it is stored unopened at the recommended temperature herein. Product warranties for this reference material are set out in the terms and conditions of purchase.

CERTIFIED BY		CERTIFIED ON	
N. Müller	29 May 2020		RM Release



REFERENCE MATERIAL CERTIFICATE

CHROMATOGRAM

No chromatogram available.

Instrument

GC/FID

Detection

FID

Column

Optima-5MS, 0.25 µm, 0.25 mm

Method Details

Initial Temp: 60°C / 5 min, End Temp: 280°C / 1 min, Gradient: 15°C/min

Inj.-Vol.

1 µL

Flow

1 mL/min

Method of Preparation

The certified value is based on gravimetric and volumetric preparation of this RM. This RM has been confirmed by the appropriate analytical techniques.

Batch Information

Solvent: Methanol, Lot No. V8F518048G50, 50.00 mL.

Main Impurity: Isomer

Gravimetric Data

Compound Name	Lot No.	Weight (mg)	Purity (%)
Bis-(2-chloro-1-methylethyl) ether	981862	138.123	72.4

Intended Use

This RM is intended for use in a laboratory as a calibration and quality control standard or in method development for analytical techniques.

Safety

Proper precautions should be observed while handling. See Safety Data Sheet.

Traceability

The balances used for gravimetric measurements are calibrated with weights traceable to the national standards (DKD). The calibration of

the balances is verified daily internally and annually by an external accredited calibration service. Chromatographic methods are traceable to the International System of Units (SI).

Storage

The RM should be stored in the original sealed container at the indicated temperature.

Instructions for use

The RM should be used shortly after opening to avoid concentration changes due to evaporation. It is recommended to use 1 mL as the minimum sample size and if less material is used, to increase the certified uncertainty by a factor of two for half sample and four for a quarter of sample. If storage after opening is necessary, the RM should be tightly closed and kept from light and moisture. If the RM was in a sealed ampoule, it should be transferred to a vial with minimum head space. Visit the support section of our website lgcstandards.com for a series of Dr. Ehrenstorfer Tech Tip videos and frequently asked questions.