

Gravimetric Certificate

**EHRENSTORFER™**

Product Identification

11404400 Chlorodifluoromethane
Formula CHClF₂
Mol.Weight 86.5
CAS No. 75-45-6

Expiry Date 05.03.2023

Lot Number 169118ME

Store at 20°C in the dark

Please note: The expiry date is valid under recommended storage conditions only.

Specification				
Product Name		Conc. (mg/l)	Purity %	Volume (ml)
Chlorodifluoromethane		100.000	99.0	10.000
Solvent Information				
Solvent		Lot No.	Exact Quantity (ml)	
Methanol		170645135	100.00	
Traceability Data				
11404400 120868		neat product		
11404400 80226ME		10000.000 mg/l		
11404400 80227ME		1000.000 mg/l		
11404400 169118ME		100.000 mg/l		
Analytical Data				
Detection: GC/MSD		Method Details:		
Column: DB-5, 30 m, ID 0.25 mm		Injector: 100° C		
Inj.-Vol.: 1.00 µl		Start Temperature: 40° C for 5 min		
Flow: 1.0 ml/min		End Temperature: 40° C for 0 min		
Ret.-Time: 1.41 min.		Gradient: 0° C/min		
Identity check RT, MS				
Comment				
The uncertainty/tolerance of this standard is +/- 10.0 %, calculated in accordance with the EURACHEM/CITAC Guide - Quantifying Uncertainty in Analytical Measurement - Second Edition. The uncertainty given is the expanded combined uncertainty and represents an estimated standard deviation equal to the positive square root of the total variance of the uncertainty of components. The expanded uncertainty is U w hich is U _c (y)*K, w here K is the coverage factor at the 95% confidence level (K=2). The expanded uncertainty is based on the combination of uncertainties associated w ith each individual operation involved in the preparation of this product.				

Certified on 05.03.2018

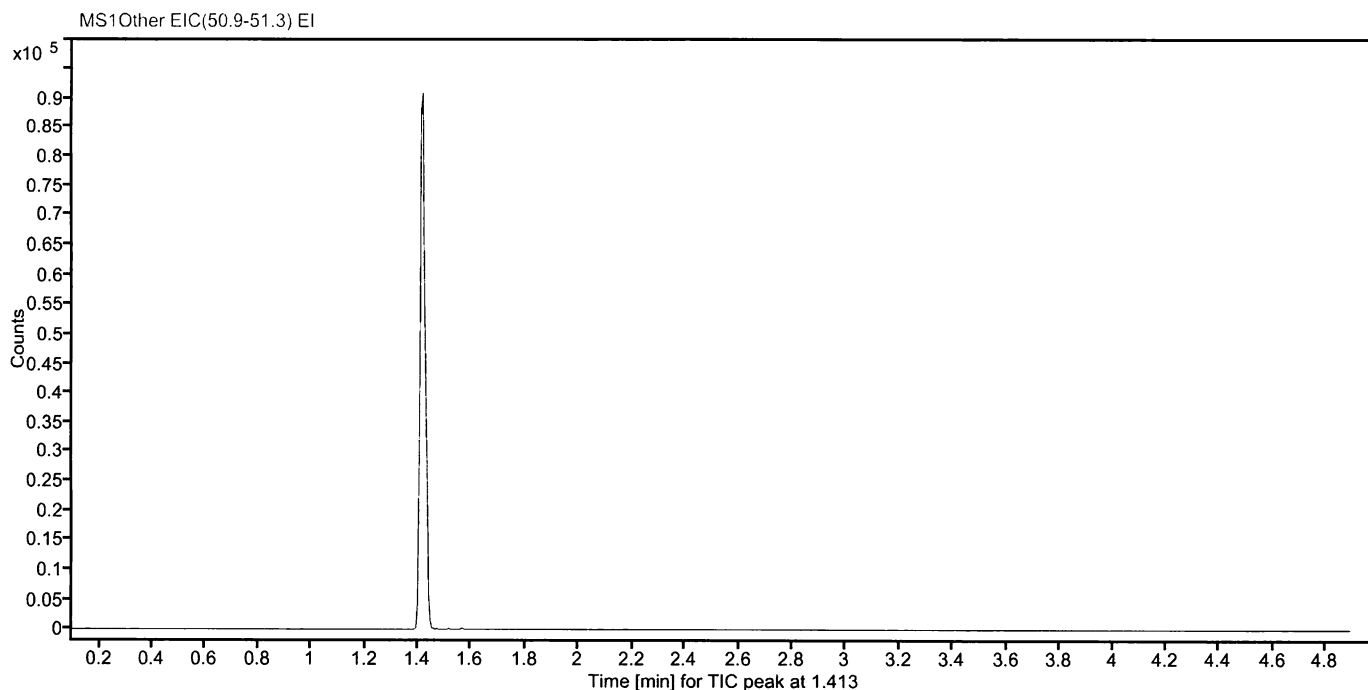
by D. Schmid

The Laboratory LGC Labor GmbH is accredited by DAkkS as indicated by the Accreditation Number D-RM-19883-01 & D-PL-19883-01 has shown competence based on ISO Guide 34:2009 with relevant parts of DIN EN ISO/IEC 17025:2005 for production of certified reference materials in form of organic pure substances and in form of single and multi-component solutions organic pure substances.

LGC Labor GmbH · Bgm.-Schlosser-Str. 6 A · 86199 Augsburg · Germany
Phone +49 821 906080 · Fax +49 821 9060888 · augsburg.inquiry@lgcgroup.com
The warranty for this product is limited to the purchasing price of this product.

02-03-2018

Data file:	11404400-15-r001.dx	Instrument:	GCMS1
Sample name:	169118ME	Sequence Name:	2018KW09-4b
Inj. volume [µl]:	1.0	Injection date:	3/1/2018 7:22:31 PM (GMT +01:00)
Acq. method:	040.amx	Location:	60
Sample Description	Chlorodifluoromethane		



Data File 11404400-15-r001.dx

Nr.	Signal Description	RT [min]	Area [counts*s]	Height [counts]	Area%
1	MS1Other EIC(50.7-51.7) EI	1.41	123573.28759	93582.31	100.00
	Sum		123573.29		

Schmid D.