

Gravimetric Certificate

Dr. Ehrenstorfer



Product Identification

13120000 Endosulfan (alpha and beta)
Formula C₉H₆Cl₆O₃S
Mol.Weight 406.93
CAS No. 115-29-7

Reference Materials for Residue Analysis

Expiry Date 04.09.2021
Lot Number 152998AL
Store at 20°C in the dark

Please note: The expiry date is valid under recommended storage conditions only.

Gravimetric Data				
Product Name		Conc. (mg/l)	Purity %	Weight (mg)
Endosulfan (alpha and beta)		10.000	98.7	3.243
Solvent Information				
Solvent		Lot No.	Exact Quantity (ml)	
Acetonitrile		115261133	320.00	
Traceability Data				
13120000 143305		neat product		
13120000 152998AL		10.000 mg/l		
Analytical Data				
Detection: GC/ECD		Method Details:		
Column: DB-5, 30 m, ID 0.25 mm		Injector: 320° C		
Inj.-Vol.: 0.20 µl		Start Temperature: 120° C for 4 min		
Flow : 1.0 ml/min		End Temperature: 320° C for 5 min		
Ret.-Time:		Gradient: 15° C/min		
Identity check RT				
Comment		May isomerize during GC analysis.		
The uncertainty/tolerance of this standard is +/- 5.0 %, calculated in accordance with the EURACHEM/CITAC Guide - Quantifying Uncertainty in Analytical Measurement - Second Edition. The uncertainty given is the expanded combined uncertainty and represents an estimated standard deviation equal to the positive square root of the total variance of the uncertainty of components. The expanded uncertainty is U w hich is Uc(y)*K, w here K is the coverage factor at the 95% confidence level (K=2). The expanded uncertainty is based on the combination of uncertainties associated w ith each individual operation involved in the preparation of this product.				

Certified on 04.09.2017

by M. Beck

The Laboratory LGC Labor GmbH is accredited by DAkkS as indicated by the Accreditation Number D-RM-19883-01 & D-PL-19883-01 has shown competence based on ISO Guide 34:2009 with relevant parts of DIN EN ISO/IEC 17025:2005 for production of certified reference materials in form of organic pure substances and in form of single and multi-component solutions organic pure substances.

LGC Labor GmbH · Bgm.-Schlosser-Str. 6 A · 86199 Augsburg · Germany
Phone +49 821 906080 · Fax +49 821 9060888 · augsburg.inquiry@lgcgroup.com
The warranty for this product is limited to the purchasing price of this product.

Data file: 13120000-20-r002.dx

Instrument: ECD

Sample name: 152998AL

Sequence Name: 2017KW35-4a

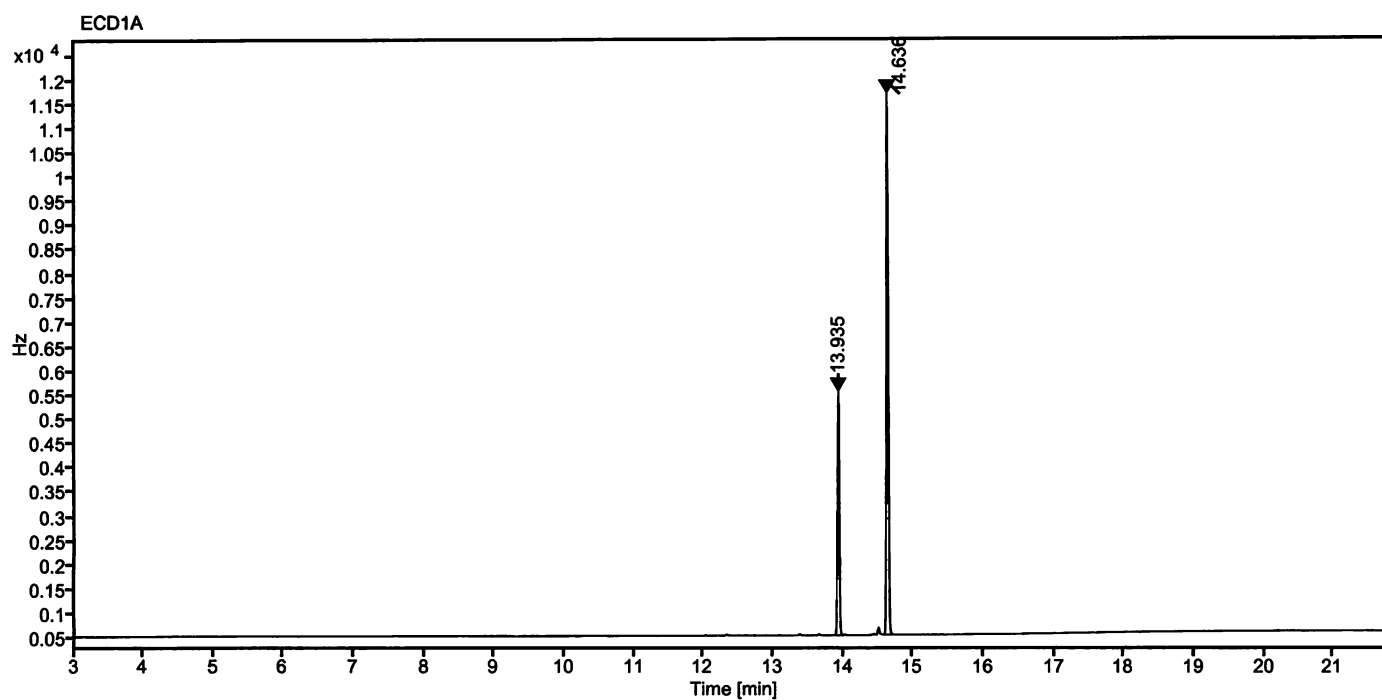
Inj. volume [μ l]: 0.2

Injection date: 9/1/2017 3:42:17 AM

Acq. method: PAHK.amx

Location: 15

Sample Description Endosulfan (alpha and beta)



Signal: ECD1A

Nr.	RT [min]	Area [Hz*s]	Height [Hz]	Area%	Width [min]
1	13.935	8493.62194	5019.90	30.82	0.112
2	14.636	19061.43885	11133.88	69.18	0.165
Sum		27555.06			

J. B. B.