

Gravimetric Certificate

**EHRENSTORFER™**

Product Identification

20101600 Aroclor 1016
Formula N/A
Mol.Weight N/A
CAS No. 12674-11-2

Expiry Date 05.04.2023
Lot Number 169124CY
Store at 20°C in the dark

Please note: The expiry date is valid under recommended storage conditions only.

Gravimetric Data				
Product Name		Conc. (mg/l)	Purity %	Weight (mg)
Aroclor 1016		10.000	99.9	6.708
Solvent Information				
Solvent	Lot No.	Exact Quantity (ml)		
Cyclohexane	1092831712	670.00		
Traceability Data				
20101600 51016	neat product			
20101600 169124CY	10.000 mg/l			
Analytical Data				
Detection: GC/ECD	Method Details:			
Column: DB-5, 30 m, ID 0.25 mm	Injector: 280° C			
Inj.-Vol.: 1.00 µl	Start Temperature: 60° C for 5 min			
Flow: 1.0 ml/min	End Temperature: 280° C for 1 min			
Ret.-Time:	Gradient: 15° C/min			
Identity check RT				
Comment				
The uncertainty/tolerance of this standard is +/- 2.0 %, calculated in accordance with the EURACHEM/CITAC Guide - Quantifying Uncertainty in Analytical Measurement - Second Edition. The uncertainty given is the expanded combined uncertainty and represents an estimated standard deviation equal to the positive square root of the total variance of the uncertainty of components. The expanded uncertainty is U_w which is $U_c(y) \cdot K$, where K is the coverage factor at the 95% confidence level ($K=2$). The expanded uncertainty is based on the combination of uncertainties associated with each individual operation involved in the preparation of this product.				

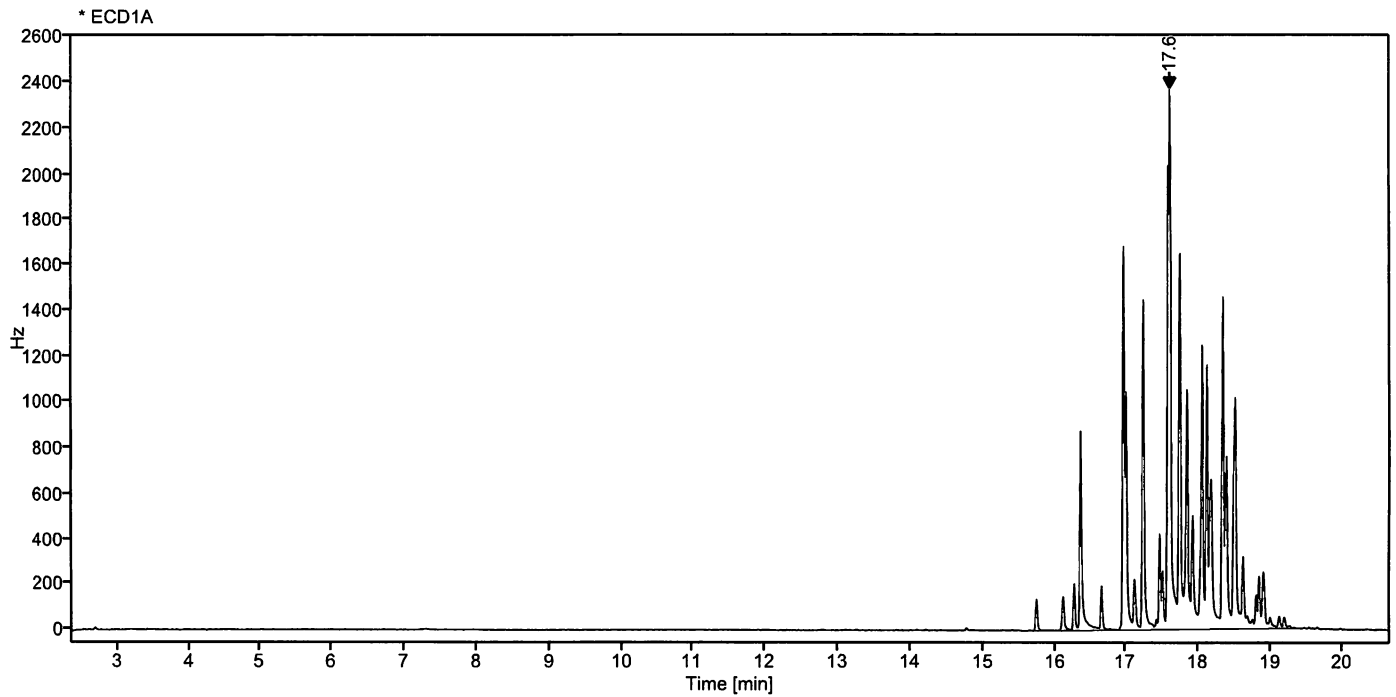
Certified on 05.04.2018
by D. Schmid

Schmid D.

The Laboratory LGC Labor GmbH is accredited by DAkkS as indicated by the Accreditation Number D-RM-19883-01 & D-PL-19883-01 has shown competence based on ISO Guide 34:2009 with relevant parts of DIN EN ISO/IEC 17025:2005 for production of certified reference materials in form of organic pure substances and in form of single and multi-component solutions organic pure substances.

LGC Labor GmbH · Bgm.-Schlosser-Str. 6 A · 86199 Augsburg · Germany
Phone +49 821 906080 · Fax +49 821 9060888 · augsburg.inquiry@lgcgroup.com
The warranty for this product is limited to the purchasing price of this product.

Data file: 20101600-07-r001.dx **Instrument:** ECD
Sample name: 169124CY **Sequence Name:** 2018KW12-ECD_3a
Inj. volume [µl]: 1.0 **Injection date:** 3/21/2018 3:12:21 PM
Acq. method: pesk.amx **Location:** 13
Sample Description Aroclor 1016



Signal: * ECD1A

Nr.	RT [min]	Area [Hz*s]	Height [Hz]	Area%	Width [min]
1	17.60	43753.40163	2366.30	100.00	0.221
	Sum	43753.40			

Schmid D.