

REFERENCE MATERIAL CERTIFICATE

Reference Material

This certificate is designed in accordance with ISO Guide 31. This reference material (RM) was designed, produced and verified in accordance with a registered quality management system ISO 9001. All measurements were performed according to ISO/IEC 17025 by a DAkkS accredited laboratory (D-PL-19883-01-00).

Product Name

Bifenthrin 10 µg/mL in Cyclohexane

Product Code  
DRE-L10584000CY

Lot Number  
1072654CY

CAS No.  
82657-04-3

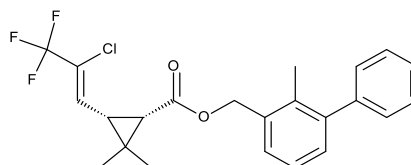
Format  
Solution

Mol. Weight  
422.87

Expiry Date  
24 Jun 2023

Mol. Formula  
C<sub>23</sub>H<sub>22</sub>ClF<sub>3</sub>O<sub>2</sub>

Storage Temp  
20°C ± 4°C



**CERTIFIED**

Concentration  
10.0 µg/mL

**CERTIFIED**

Expanded Uncertainty (U)  
0.3 µg/mL

Uncertainty

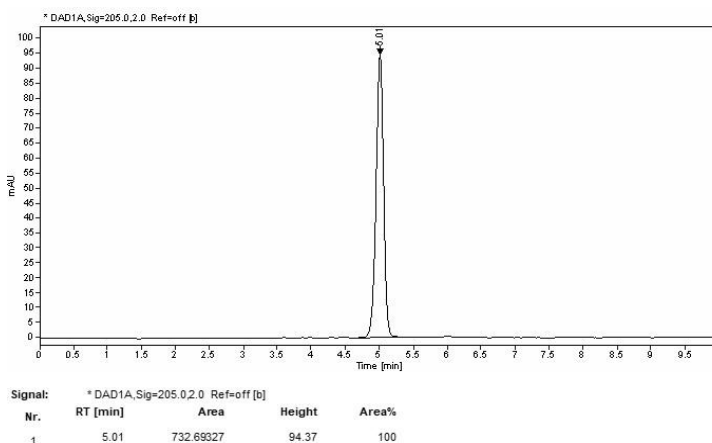
The certified value(s) and uncertainty(ies) are determined in accordance with EURACHEM/CITAC Guide for "Quantifying Uncertainty in Analytical Measurement, 3rd edition", with an 95% confidence level (k=2). Uncertainty is based on the Total Combined Uncertainty, including uncertainties of characterisation and stability testing. Stability values are based on real evidence opposed to simulation.

The producer certifies that this reference material meets the specification stated in this certificate until the expiry date, provided it is stored unopened at the recommended temperature herein. Product warranties for this reference material are set out in the terms and conditions of purchase.

CERTIFIED BY		CERTIFIED ON			RM Release
D. Schmid		24 Jun 2020			

REFERENCE MATERIAL CERTIFICATE

CHROMATOGRAM



**Instrument**

HPLC/DAD

**Detection**

DAD

**Column**

ReproSil 100 C18 5 µm 250 x 3 mm

**Method Details**

Acetonitrile:Water

9:1

**Inj.-Vol.**

10.0 µL

**Flow**

1 mL/min

**Method of Preparation**

The certified value is based on gravimetric and volumetric preparation of this RM. This RM has been confirmed by the appropriate analytical techniques.

**Batch Information**

Solvent: Cyclohexane, Lot No. 000169650323, 320.00 mL.

**Gravimetric Data**

Compound Name	Lot No.	Weight (mg)	Purity (%)
Bifenthrin	1026277	3.251	98.5

**Intended Use**

This RM is intended for use in a laboratory as a calibration and quality control standard or in method development for analytical techniques.

**Safety**

Proper precautions should be observed while handling. See Safety Data Sheet.

**Traceability**

The balances used for gravimetric measurements are calibrated with weights traceable to the national standards (DKD). The calibration of

the balances is verified daily internally and annually by an external accredited calibration service. Chromatographic methods are traceable to the International System of Units (SI).

**Storage**

The RM should be stored in the original sealed container at the indicated temperature.

**Instructions for use**

The RM should be used shortly after opening to avoid concentration changes due to evaporation. It is recommended to use 1 mL as the minimum sample size and if less material is used, to increase the certified uncertainty by a factor of two for half sample and four for a quarter of sample. If storage after opening is necessary, the RM should be tightly closed and kept from light and moisture. If the RM was in a sealed ampoule, it should be transferred to a vial with minimum head space. Visit the support section of our website [lgcstandards.com](http://lgcstandards.com) for a series of Dr. Ehrenstorfer Tech Tip videos and frequently asked questions.

LGC Labor GmbH  
 Bgm.-Schlosser-Straße 6A  
 86199 Augsburg, Germany  
 T | +49 821 906080  
 F | +49 821 9060888  
 E | [dr.ehrenstorfer@lgcgroup.com](mailto:dr.ehrenstorfer@lgcgroup.com)