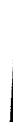


# Gravimetric Certificate

Dr. Ehrenstorfer



## Product Identification

12505800 2,5-Dichlorotoluene  
Formula C7H6Cl2  
Mol.Weight 161.03  
CAS No. 19398-61-9

## Reference Materials for Residue Analysis

Expiry Date 20.09.2022  
Lot Number 154742ME  
Store at 20°C in the dark

Please note: The expiry date is valid under recommended storage conditions only.

Gravimetric Data		Conc. (mg/l)	Purity %	Weight (mg)
Product Name	2,5-Dichlorotoluene	100.000	99.0	5.056
Solvent Information		Exact Quantity (ml)		
Solvent	Lot No.	50.00		
Methanol	170645103			
Traceability Data				
12505800 40214	neat product			
12505800 154742ME	100.000 mg/l			
Analytical Data				
Detection: GC/FID	Method Details:			
Column: DB-5, 30 m, ID 0.25 mm	Injector: 280° C			
Inj.-Vol.: 1.00 µl	Start Temperature: 60° C for 5 min			
Flow: 1.0 ml/min	End Temperature: 280° C for 1 min			
Ret.-Time: 11.14 min.	Gradient: 15° C/min			
Identity check RT				
Comment				
The uncertainty/tolerance of this standard is +/- 2.0 %, calculated in accordance with the EURACHEM/CITAC Guide - Quantifying Uncertainty in Analytical Measurement - Second Edition. The uncertainty given is the expanded combined uncertainty and represents an estimated standard deviation equal to the positive square root of the total variance of the uncertainty of components. The expanded uncertainty is U which is $Uc(y)*K$ , where K is the coverage factor at the 95% confidence level (K=2). The expanded uncertainty is based on the combination of uncertainties associated with each individual operation involved in the preparation of this product.				

Certified on 20.09.2017

by Dr. K. Wörmann

The Laboratory LGC Labor GmbH is accredited by DAkkS as indicated by the Accreditation Number D-RM-19883-01 & D-PL-19883-01 has shown competence based on ISO Guide 34:2009 with relevant parts of DIN EN ISO/IEC 17025:2005 for production of certified reference materials in form of organic pure substances and in form of single and multi-component solutions organic pure substances.

LGC Labor GmbH · Bgm.-Schlosser-Str. 6 A · 86199 Augsburg · Germany  
Phone +49 821 906080 · Fax +49 821 9060888 · augsburg.inquiry@lgcgroup.com  
The warranty for this product is limited to the purchasing price of this product.

20170919

Data file: 12505800-14-r001.dx

Instrument: FID 2

Sample name: 154742ME

Sequence Name: 2017KW38-2a

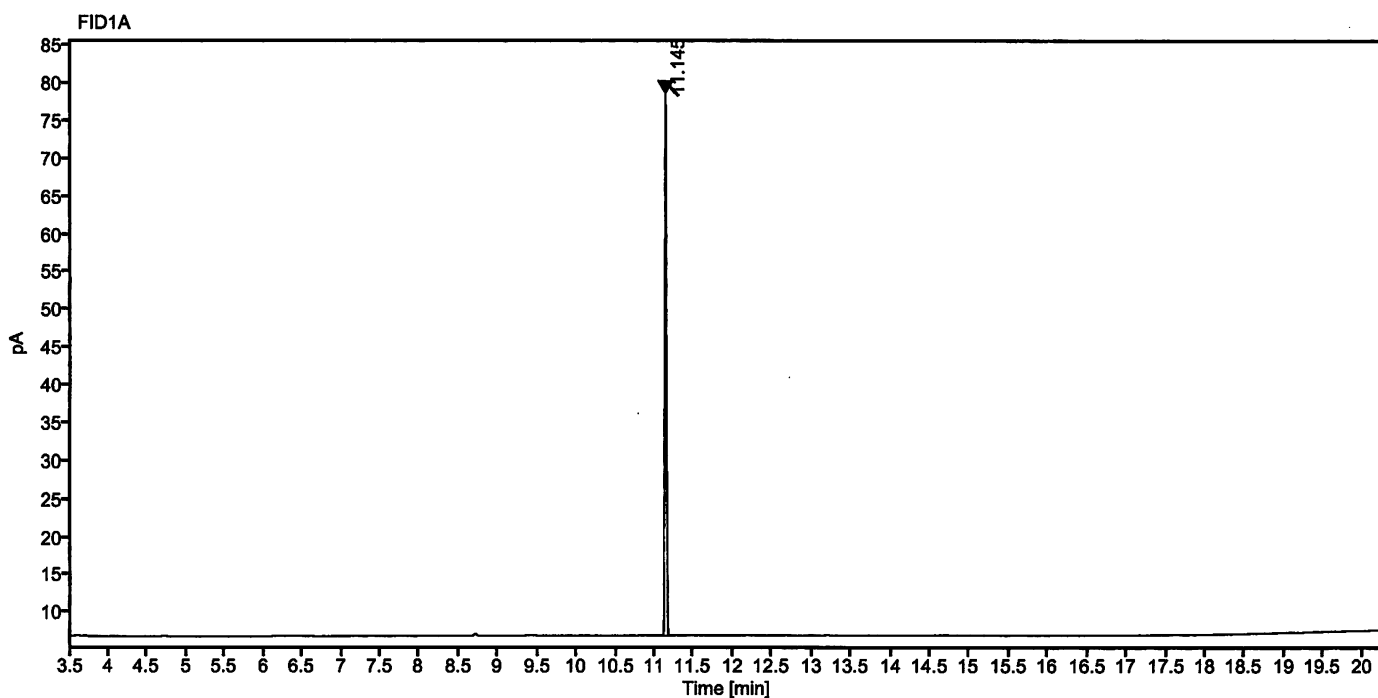
Inj. volume [µl]: 1.0

Injection date: 9/19/2017 11:09:07 PM

Acq. method: pesk.amx

Location: 17

Sample Description 2,5-Dichlorotoluene



Signal: FID1A

Nr.	RT [min]	Area [pA*s]	Height [pA]	Area%	Width [min]
1	11.145	99.97126	71.61	100.00	0.110
	Sum	99.97			