

# Gravimetric Certificate

**EHRENSTORFER™**

## Product Identification

20004700 PCB No. 47  
Formula C<sub>12</sub>H<sub>6</sub>Cl<sub>4</sub>  
Mol.Weight 291.99  
CAS No. 2437-79-8

Expiry Date 04.07.2023  
Lot Number 752286IO  
Store at 20°C in the dark

Please note: The expiry date is valid under recommended storage conditions only.

<b>Gravimetric Data</b>			
Product Name		Conc. (mg/l)	Purity %
PCB No. 47		10.000	99.0
			Weight (mg)
			3.235
<b>Solvent Information</b>			
Solvent	Lot No.	Exact Quantity (ml)	
Iso-Octane	H355M21	320.00	
<b>Traceability Data</b>			
20004700 157816	neat product		
20004700 752286IO	10.000 mg/l		
<b>Analytical Data</b>			
Detection: GC/ECD	Method Details:		
Column: DB-5, 30 m, ID 0.25 mm	Injector: 280° C		
Inj.-Vol.: 1.00 µl	Start Temperature: 60° C for 5 min		
Flow: 1.0 ml/min	End Temperature: 280° C for 1 min		
Ret.-Time: 18.14 min.	Gradient: 15° C/min		
<b>Identity check RT</b>			
Comment			
The uncertainty/tolerance of this standard is +/- 2.0 %, calculated in accordance with the EURACHEM/CITAC Guide - Quantifying Uncertainty in Analytical Measurement - Second Edition. The uncertainty given is the expanded combined uncertainty and represents an estimated standard deviation equal to the positive square root of the total variance of the uncertainty of components. The expanded uncertainty is U which is Uc(y)*K, where K is the coverage factor at the 95% confidence level (K=2). The expanded uncertainty is based on the combination of uncertainties associated with each individual operation involved in the preparation of this product.			

Certified on 04.07.2018

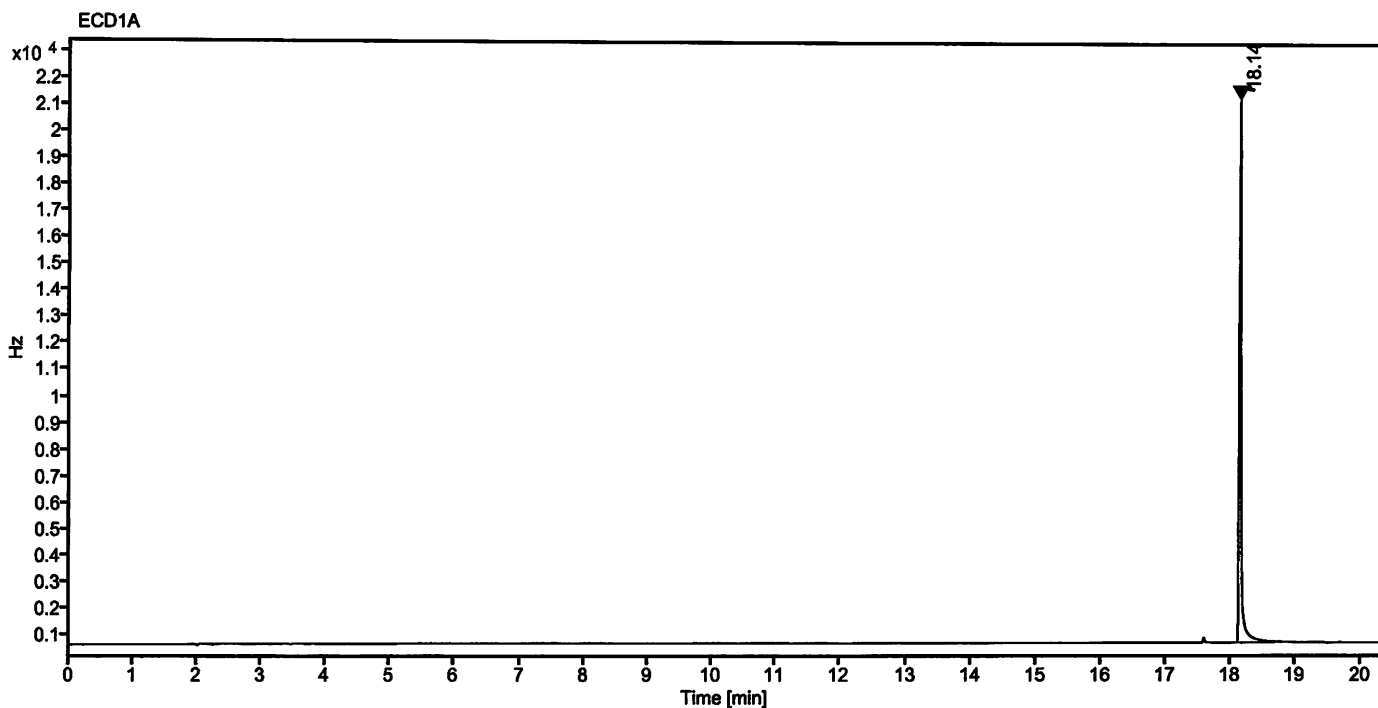
by N. Müller

The Laboratory LGC Labor GmbH is accredited by DAkkS as indicated by the Accreditation Number D-RM-19883-01 & D-PL-19883-01 has shown competence based on ISO Guide 34:2009 with relevant parts of DIN EN ISO/IEC 17025:2005 for production of certified reference materials in form of organic pure substances and in form of single and multi-component solutions organic pure substances.

LGC Labor GmbH · Bgm.-Schlosser-Str. 6 A · 86199 Augsburg · Germany  
Phone +49 821 906080 · Fax +49 821 9060888 · augsburg.inquiry@lgcgroup.com  
The warranty for this product is limited to the purchasing price of this product.

0407 J

**Data file:** 20004700-13-r001.dx      **Instrument:** ECD  
**Sample name:** 752286IO      **Sequence Name:** 2018KW27-ECD-0703  
**Inj. volume [µl]:** 1.0      **Injection date:** 7/3/2018 8:52:50 PM  
**Acq. method:** PESK.amx      **Location:** 51  
**Sample Description:** PCB No. 47



Signal: ECD1A

Nr.	RT [min]	Area [Hz*s]	Height [Hz]	Area%	Width [min]
1	18.14	42747.83173	20655.08	100.00	0.031
	Sum	42747.83			

*Handwritten signature*