

## REFERENCE MATERIAL CERTIFICATE

## Reference Material

This certificate is designed in accordance with ISO Guide 31. This reference material (RM) was designed, produced and verified in accordance with a registered quality management system ISO 9001. All measurements were performed according to ISO/IEC 17025 by a DAkkS accredited laboratory (D-PL-19883-01-00).

## Product Name

3-Methylfuran

## Product Code

DRE-C15086070

## CAS No.

930-27-8

## Mol. Weight

82.10

## Mol. Formula

C<sub>5</sub>H<sub>6</sub>O

## Lot Number

1116346

## Format

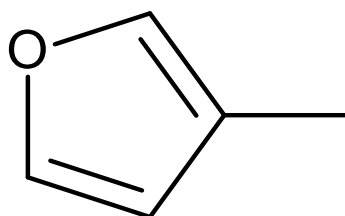
Neat

## Expiry Date

08 Mar 2027

## Storage Temp

20°C ± 4°C



CERTIFIED

Purity  
99.7% (g/g)

CERTIFIED

Expanded Uncertainty (U)  
2.0% (g/g)

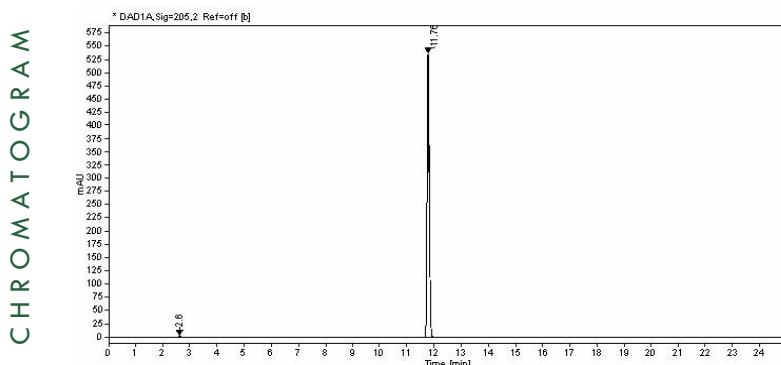
## Uncertainty

The certified value(s) and uncertainty(ies) are determined in accordance with EURACHEM/CITAC Guide for "Quantifying Uncertainty in Analytical Measurement, 3rd edition", with an 95% confidence level (k=2). Uncertainty is based on the Total Combined Uncertainty, including uncertainties of characterisation and stability testing. Stability values are based on real evidence opposed to simulation.

The producer certifies that this reference material meets the specification stated in this certificate until the expiry date, provided it is stored unopened at the recommended temperature herein. Product warranties for this reference material are set out in the terms and conditions of purchase.

CERTIFIED BY	CERTIFIED ON		
D. Schmid	08 Mar 2021		RM Release

REFERENCE MATERIAL CERTIFICATE



Signal: * DAD1A, Sig=205,2 Ref=off [b]				
Nr.	RT [min]	Area	Height	Area%
1	2.6	8.07851	1.87	0.27
2	11.76	2930.72674	536.15	99.73

**Instrument**

HPLC/DAD

**Detection**

DAD

**Column**

ReproSil 100 C18 5 µm 250 x 3 mm

**Method Details**

see Batch Information

**Inj.-Vol.**

1.0 µL

**Flow**

1 mL/min

**Method of Characterisation**

Purity = 100% – Assay impurities

**Method of Identification**

RT, MS, UV

**Batch Information**

Method Details

Eluent A: 100% Acetonitrile

Eluent B: 100% Water

Time [min]	Eluent A [%]	Eluent B [%]
0	10	90
1	10	90
20	100	0
25	100	0

**Intended Use**

This RM is intended for use in a laboratory as a calibration and quality control standard or in method development for analytical techniques.

**Safety**

Proper precautions should be observed while handling. See Safety Data Sheet.

**Traceability**

The balances used for gravimetric measurements are calibrated with weights traceable to the national

standards (DKD). The calibration of the balances is verified daily internally and annually by an external accredited calibration service. Chromatographic methods are traceable to the International System of Units (SI).

**Storage**

The RM should be stored in the original sealed container at the indicated temperature.

**Instructions for use**

It is recommended to use 1 mg as the minimum sample size and if less material is used, to increase the certified uncertainty by a factor of two for half sample and four for a quarter of sample. If storage after opening is necessary, the RM should be tightly closed and kept from light and moisture. If the RM was in a sealed ampoule, it should be transferred to a vial with minimum head space. Visit the support section of our website [lgcstandards.com](http://lgcstandards.com) for a series of Dr. Ehrenstorfer Tech Tip videos and frequently asked questions.

LGC Labor GmbH  
 Bgm.-Schlosser-Straße 6A  
 86199 Augsburg, Germany  
 T | +49 821 906080  
 F | +49 821 9060888  
 E | [dr.ehrenstorfer@lgcgroup.com](mailto:dr.ehrenstorfer@lgcgroup.com)