

Gravimetric Certificate

**EHRENSTORFER™**

Product Identification

17894300 Tris(2-chloroethyl)phosphate
Formula C₆H₁₂Cl₃O₄P
Mol.Weight 285.49
CAS No. 115-96-8

Expiry Date 28.02.2022
Lot Number 168911CY
Store at 20°C in the dark

Please note: The expiry date is valid under recommended storage conditions only.

Gravimetric Data		Conc. (mg/l)	Purity %	Weight (mg)
Product Name	Tris(2-chloroethyl)phosphate	10.000	99.0	5.863
Solvent Information		Exact Quantity (ml)		
Solvent	Lot No.	580.00		
Cyclohexane	I09273172			
Traceability Data				
17894300 50102	neat product			
17894300 168911CY	10.000 mg/l			
Analytical Data				
Detection: GC/ECD	Method Details:			
Column: DB-5, 30 m, ID 0.25 mm	Injector: 280° C			
Inj.-Vol.: 2.00 µl	Start Temperature: 60° C for 5 min			
Flow: 1.0 ml/min	End Temperature: 280° C for 1 min			
Ret.-Time: 16.59 min.	Gradient: 15° C/min			
Identity check RT				
Comment				
The uncertainty/tolerance of this standard is +/- 2.0 %, calculated in accordance with the EURACHEM/CITAC Guide - Quantifying Uncertainty in Analytical Measurement - Second Edition. The uncertainty given is the expanded combined uncertainty and represents an estimated standard deviation equal to the positive square root of the total variance of the uncertainty of components. The expanded uncertainty is U which is Uc(y)*K, where K is the coverage factor at the 95% confidence level (K=2). The expanded uncertainty is based on the combination of uncertainties associated with each individual operation involved in the preparation of this product.				

Certified on 28.02.2018

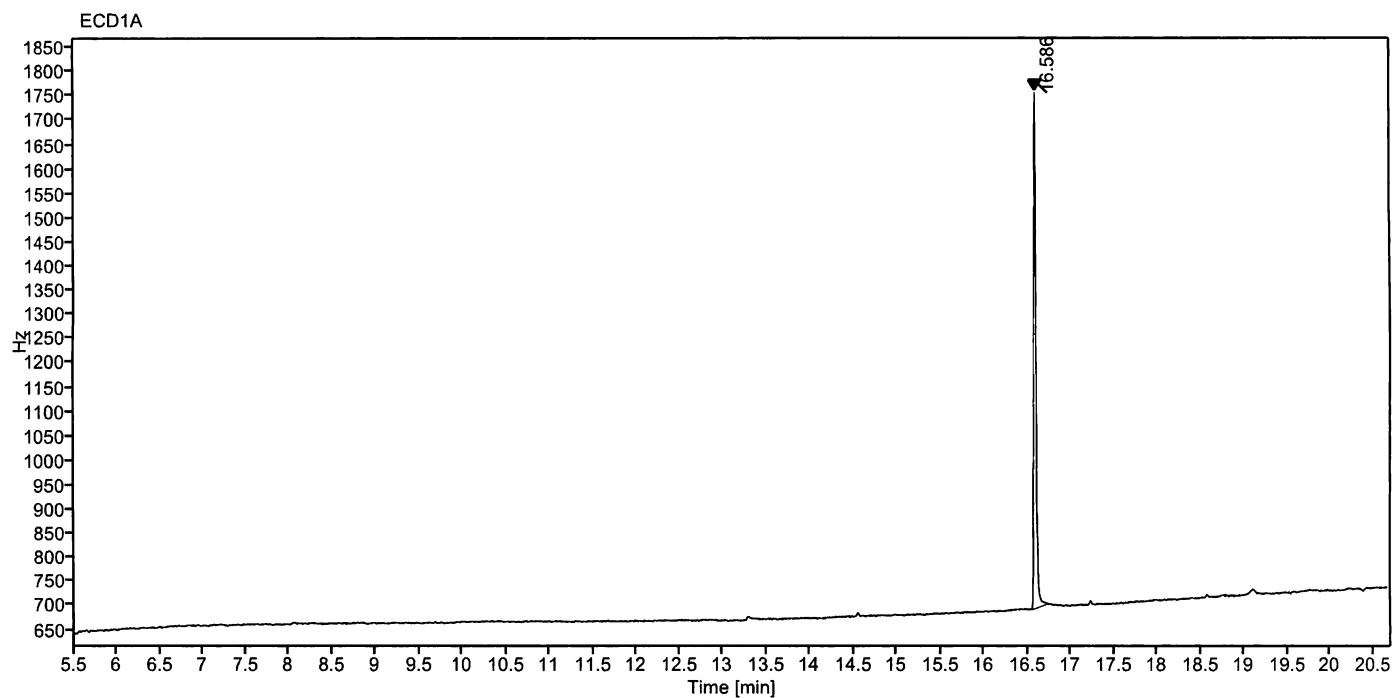
by D. Schmid

The Laboratory LGC Labor GmbH is accredited by DAkkS as indicated by the Accreditation Number D-RM-19883-01 & D-PL-19883-01 has shown competence based on ISO Guide 34:2009 with relevant parts of DIN EN ISO/IEC 17025:2005 for production of certified reference materials in form of organic pure substances and in form of single and multi-component solutions organic pure substances.

LGC Labor GmbH · Bgm.-Schlosser-Str. 6 A · 86199 Augsburg · Germany
Phone +49 821 906080 · Fax +49 821 9060888 · augsburg.inquiry@lgcgroup.com
The warranty for this product is limited to the purchasing price of this product.

Data file: 17894300-07-r001.dx Instrument: ECD
Sample name: 168911CY Sequence Name: 2018KW08-5b
Inj. volume [µl]: 2.0 Injection date: 2/24/2018 10:59:40 PM
Acq. method: pesk_2.amx Location: 141

Sample Description Tris(2-chloroethyl)phosphate



Signal: ECD1A

Nr.	RT [min]	Area [Hz*s]	Height [Hz]	Area%	Width [min]
1	16.586	1939.55586	1062.90	100.00	0.028
	Sum	1939.56			

Schmid D.