

# Gravimetric Certificate

**EHRENSTORFER™**

## Product Identification

15140400 4-Methylphenol  
Formula C7H8O  
Mol.Weight 108.14  
CAS No. 106-44-5

Expiry Date 13.06.2021  
Lot Number 451609ME  
Store at 20°C in the dark

Please note: The expiry date is valid under recommended storage conditions only.

Gravimetric Data				
Product Name		Conc. (mg/l)	Purity %	Weight (mg)
4-Methylphenol		10.000	99.4	3.219
Solvent Information				
Solvent	Lot No.	Exact Quantity (ml)		
Methanol	17114546	320.00		
Traceability Data				
15140400 G156710	neat product			
15140400 451609ME	10.000 mg/l			
Analytical Data				
Detection: HPLC/DAD	Method Details:			
Column: ReproSil 100 C18 5 $\mu$ 250x3	Acetonitrile:H2O+0,5% H3PO4 2:1			
Inj.-Vol.: 10.00 $\mu$ l				
Flow: 1.0 ml/min				
Ret.-Time: 1.73 min.				
Identity check UV, RT				
Comment				
The uncertainty/tolerance of this standard is +/- 2.0 %, calculated in accordance with the EURACHEM/CITAC Guide - Quantifying Uncertainty in Analytical Measurement - Second Edition. The uncertainty given is the expanded combined uncertainty and represents an estimated standard deviation equal to the positive square root of the total variance of the uncertainty of components. The expanded uncertainty is U w hich is $Uc(y)*K$ , w here K is the coverage factor at the 95% confidence level (K=2). The expanded uncertainty is based on the combination of uncertainties associated with each individual operation involved in the preparation of this product.				

Certified on 13.06.2018

by D. Schmid

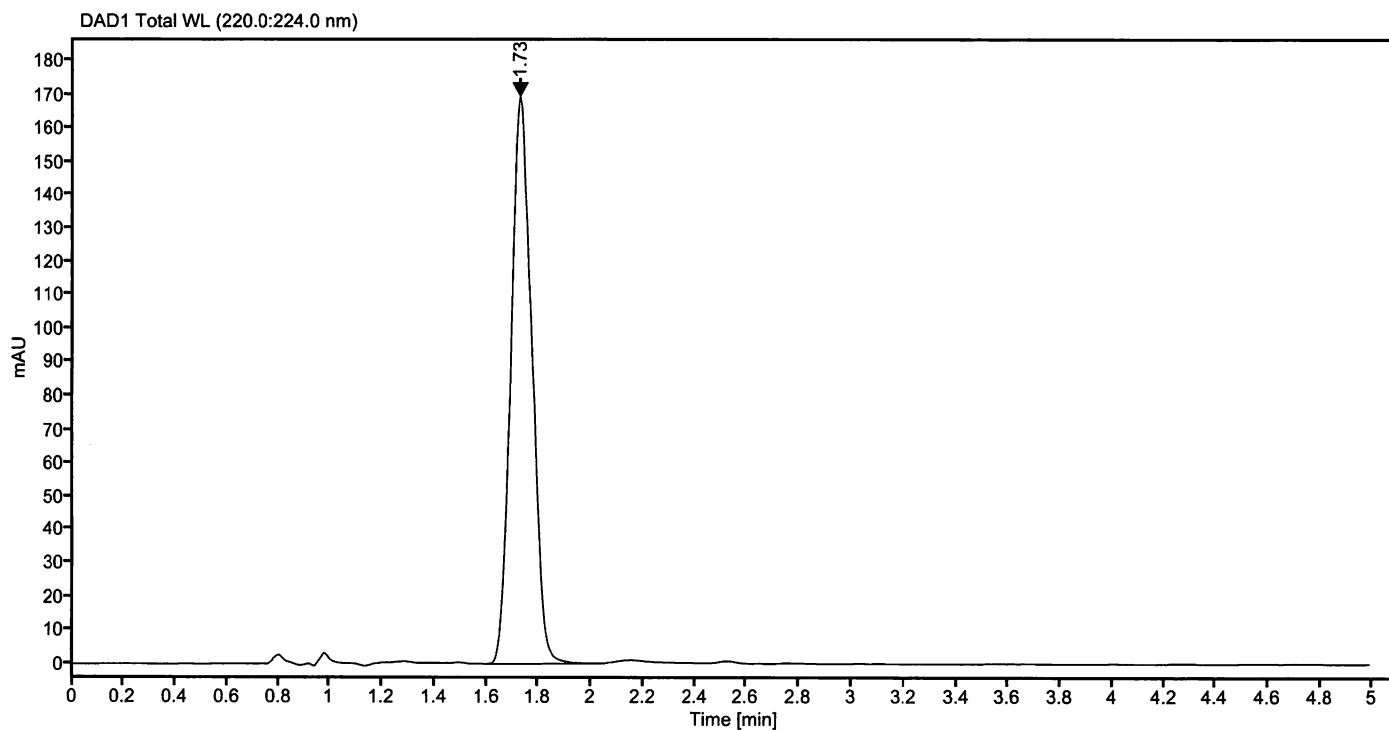
The Laboratory LGC Labor GmbH is accredited by DAkkS as indicated by the Accreditation Number D-RM-19883-01 & D-PL-19883-01 has shown competence based on ISO Guide 34:2009 with relevant parts of DIN EN ISO/IEC 17025:2005 for production of certified reference materials in form of organic pure substances and in form of single and multi-component solutions organic pure substances.

LGC Labor GmbH · Bgm.-Schlosser-Str. 6 A · 86199 Augsburg · Germany  
Phone +49 821 906080 · Fax +49 821 9060888 · [augsburg.inquiry@lgcgroup.com](mailto:augsburg.inquiry@lgcgroup.com)  
The warranty for this product is limited to the purchasing price of this product.

28058  
MLG

**Data file:** 15140400-20-r001.dx      **Instrument:** DAD4  
**Sample name:** 451609ME      **Sequence Name:** 05042018-1  
**Inj. volume [µl]:** 10.0      **Injection date:** 4/5/2018 9:31:39 PM  
**Acq. method:** 21PK.amx      **Location:** 38

**Sample Description**      4-Methylphenol



**Signal:** DAD1 Total WL (220.0:224.0 nm)

Nr.	RT [min]	Area	Height	Area%
1	1.73	941.93223	169.53	100.00
	Sum	941.93		

Schmid D.