

# Certificate of Analysis



EHRENSTORFER™

## Product Identification

10655675 Bisphenol BP

CA Phenol, 4,4'-(diphenylmethylene)bis-  
IUPAC

Formula C25H20O2

Mol.Weight 352.43

CAS No. 1844-01-5

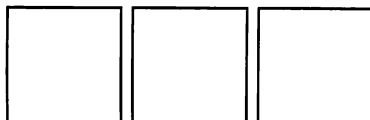
Expiry Date 08.03.2024

Lot Number 142866

Store at 20 °C ±4 °C

Please note: The expiry date is valid under recommended storage conditions only.

## Toxicological Data



R Code

S Code

LD50 (Rats female/male in mg/kg)

## Physical Data

Phase amorphous solid

Color white

Melt.Range

Boiling Range (lit.)

## Analytical Data

Detection: UHPLC/DAD

Column: LUNA Omega C18 1.6 µm 100 x 2.1 mm

Inj.-Vol.: 2.00 µl

Flow: 0.5 ml/min

Ret.-Time: 6.56 min.

Method Details:

Eluent A: WA

Eluent B: Acetonitrile

Time/min	A	B
0	90%	10%
0.3	90%	10%
8	0%	100%
9.5	0%	100%
10	90%	10%

Identity: IR, UV, RT, MS, EA, NMR

Comment

Water Content 0.2 % Determined by Karl-Fischer Titration

Det. Purity 99.3 % Tolerance/Uncertainty +/- 0.5 %

The uncertainty/tolerance of this standard is calculated in accordance with the EURACHEM/CITAC Guide - Quantifying Uncertainty in Analytical Measurement - Second Edition. The uncertainty given is the expanded combined uncertainty and represents an estimated standard deviation equal to the positive square root of the total variance of the uncertainty of components. The expanded uncertainty is U which is  $U_c(y) \cdot K$ , where K is the coverage factor at the 95% confidence level (K=2). The expanded uncertainty is based on the combination of uncertainties associated with each individual operation involved in the preparation of this product.

Certified on 08.03.2018

by M. Beck

The Laboratory LGC Labor GmbH is accredited by DAkkS as indicated by the Accreditation Number D-RM-19883-01 & D-PL-19883-01 has shown competence based on ISO Guide 34:2009 with relevant parts of DIN EN ISO/IEC 17025:2005 for production of certified reference materials in form of organic pure substances and in form of single and multi-component solutions organic pure substances.

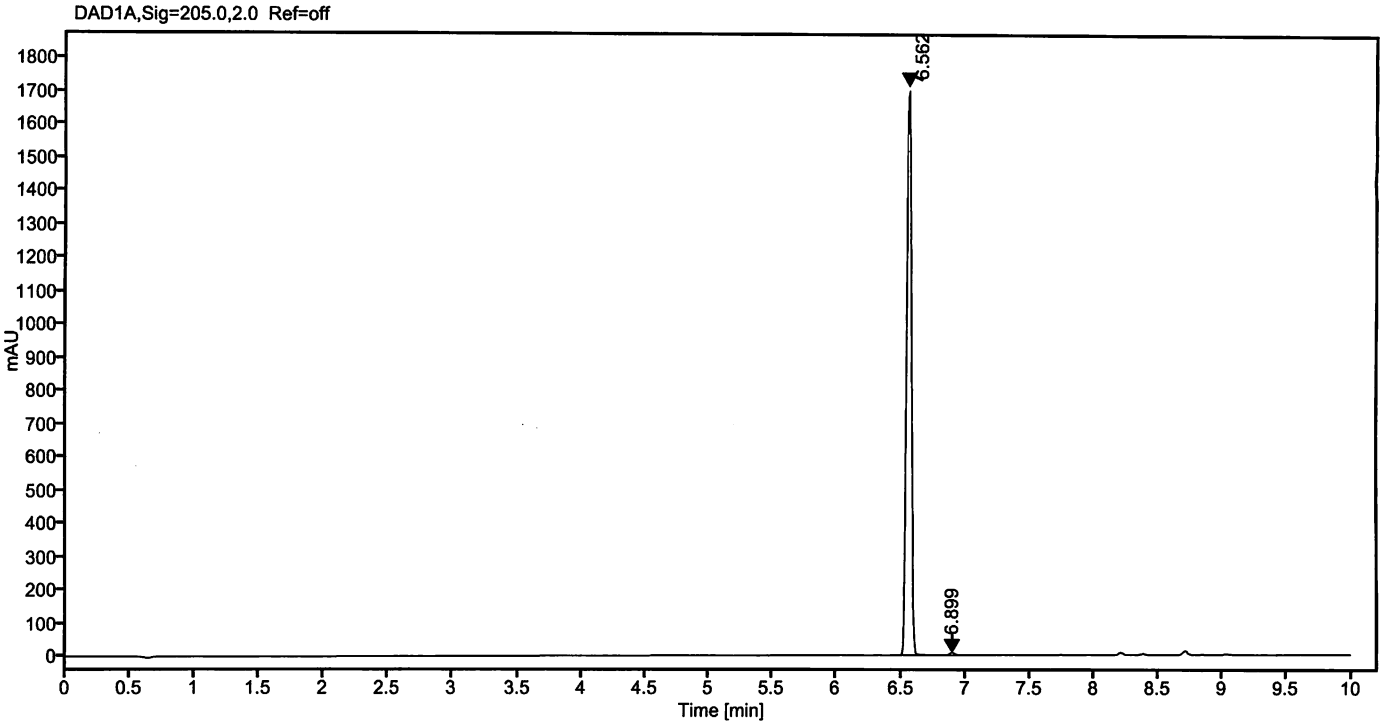
LGC Labor GmbH · Bgm.-Schlosser-Str. 6 A · 86199 Augsburg · Germany  
Phone +49 821 906080 · Fax +49 821 9060888 · augsburg.inquiry@lgcgroup.com  
The warranty for this product is limited to the purchasing price of this product.

Data file: 10655675-22-r001.dx  
Sample name: 71205AL 142866  
Inj. volume [µl]: 2.0  
Acq. method: Gradient\_10-100.amx

Instrument: UHPLC 2  
Sequence Name: 06122017-1a  
Injection date: 12/6/2017 9:28:26 PM  
Location: P2-B7

*M*

Sample Description Bisphenol BP



Signal: DAD1A, Sig=205.0, 2.0 Ref=off

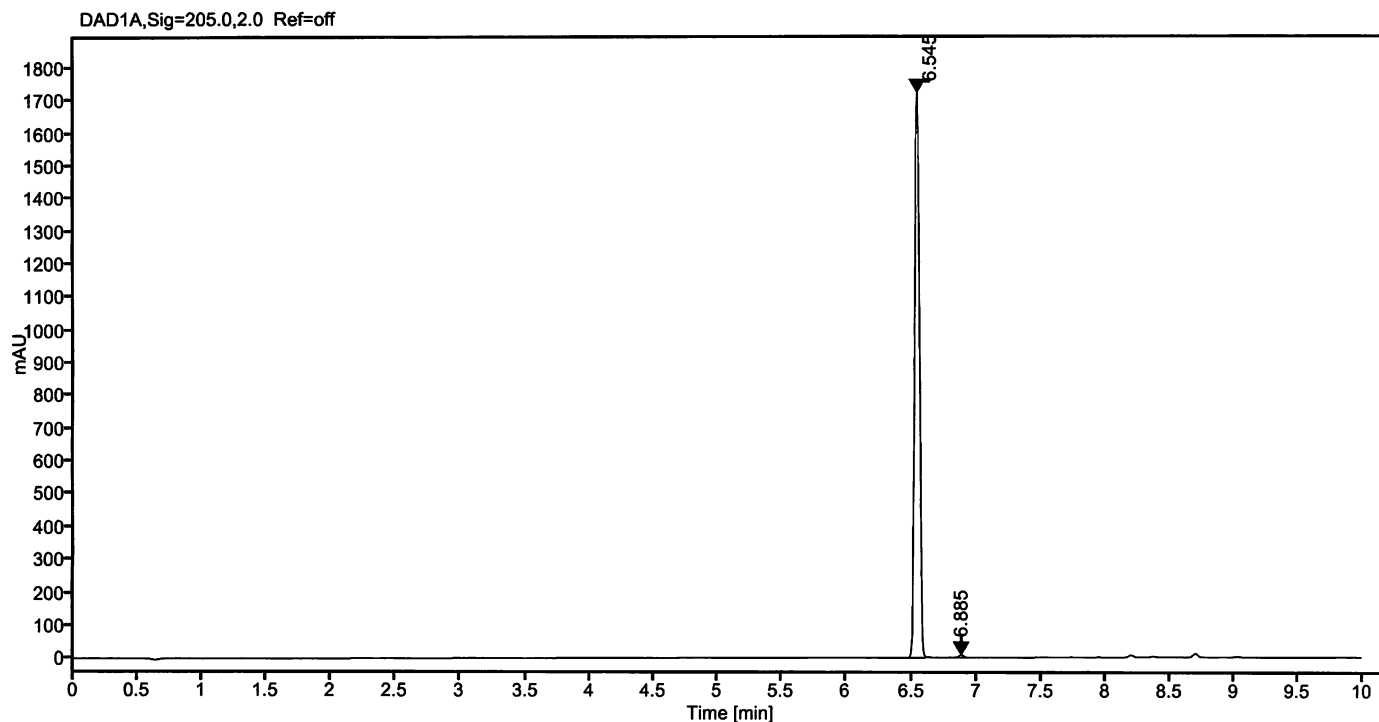
Nr.	RT [min]	Area	Height	Area%
1	6.562	4468.01606	1716.13	99.57
2	6.899	19.42283	7.20	0.43
	Sum	4487.44		

*P. Beck*

Data file: 10655675-22-r002.dx  
Sample name: 71205AL 142866  
Inj. volume [µl]: 2.0  
Acq. method: Gradient\_10-100.amx

Instrument: UHPLC 2  
Sequence Name: 06122017-1a  
Injection date: 12/6/2017 9:41:03 PM  
Location: P2-B7

Sample Description Bisphenol BP



Signal: DAD1A,Sig=205.0,2.0 Ref=off

Nr.	RT [min]	Area	Height	Area%
1	6.545	4472.87026	1717.92	99.56
2	6.885	19.59364	7.20	0.44
	Sum	4492.46		