



Reference Material

This certificate is designed in accordance with ISO 17034 and ISO Guide 31. This reference material (RM) was designed, produced and verified in accordance with ISO/IEC 17025, ISO 17034 and a registered quality management system ISO 9001.

Product Name

Chloroparaffin C18-C20 49% Cl 100 µg/mL in Cyclohexane

Product Code

DRE-X23184900CY

Lot Number

G1540468CY

CAS No.

85535-86-0

Format

Solution

Mol. Weight

Expiry Date

03 Jun 2031

Mol. Formula

Storage Temp

20°C ± 4°C

CERTIFIED

Concentration
100.00 µg/mL

CERTIFIED

Expanded Uncertainty (U)
6.15 µg/mL

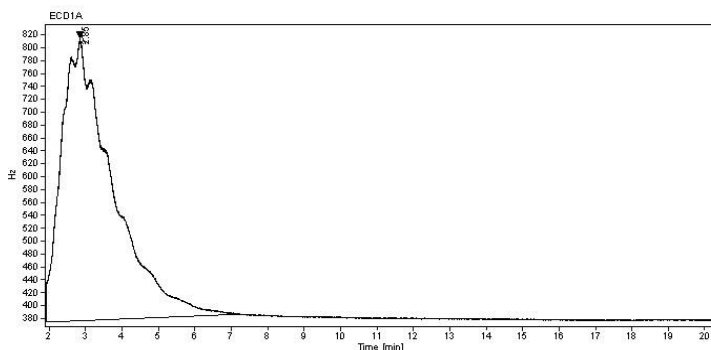
Uncertainty

The certified value(s) and uncertainty(ies) are determined in accordance with ISO 17034 with an 95% confidence level (k=2). Uncertainty is based on the Total Combined Uncertainty, including uncertainties of preparation, purity of neat materials, homogeneity and stability testing. Stability values are based on real evidence opposed to simulation.

The producer certifies that this reference material meets the specification stated in this certificate until the expiry date, provided it is stored unopened at the recommended temperature herein. Product warranties for this reference material are set out in the terms and conditions of purchase.

CERTIFIED BY	CERTIFIED ON		
I. Milusic	03 Jun 2025		RM Release

CHROMATOGRAM



Signal:	ECD1A				
Nr.	RT [min]	Area [Hz*s]	Height [Hz]	Area%	Width [min]
1	2.85	42717.27844	437.26	100.00	5.247

Instrument

GC/ECD

Detection

ECD

Column

Optima-5MS, 0.25 µm, 0.25 mm

Method Details

Initial Temp: 320°C / 45 min, End

Temp: 320°C, Gradient: 0°C/min

Inj.-Vol.

1.0 µL

Flow

1 mL/min

Method of Preparation

The certified value is based on gravimetric and volumetric preparation of this RM. This RM has been confirmed by the appropriate analytical techniques.

Batch Information

Solvent: Cyclohexane, Lot No. 000247970227, 1200.00 mL.

Mixture of Congeners.

Gravimetric Data

Compound Name	Lot No.	Weight (mg)	Purity (%)
Chloroparaffin C18-C20 49% Cl *	1540467	120.115	99.9

*mixture of congeners -- See Batch information

Intended Use

This RM is intended for use in a laboratory as a calibration and quality control standard or in method development for analytical techniques.

Safety

Proper precautions should be observed while handling. See Safety Data Sheet.

Traceability

The balances used for gravimetric measurements are calibrated with weights traceable to the national standards (DKD). The calibration of

the balances is verified daily internally and annually by an external accredited calibration service. Chromatographic methods are traceable to the International System of Units (SI).

Homogeneity

Random replicate samples of the final packaged RM have been analysed to prove homogeneity compliant with ISO 17034.

Storage

The RM should be stored in the original sealed container at the indicated temperature.

Instructions for use

The RM should be used shortly after opening to avoid concentration changes due to evaporation. It is recommended to use 1 mL as the minimum sample size and if less material is used, to increase the certified uncertainty by a factor of two for half sample and four for a quarter of sample. If storage after opening is necessary, the RM should be tightly closed and kept from light and moisture. If the RM was in a sealed ampoule, it should be transferred to a vial with minimum head space. Visit the support section of our website lgcstandards.com for a series of Dr. Ehrenstorfer Tech Tip videos and frequently asked questions.

LGC Labor GmbH
Bgm.-Schlosser-Straße 6A
86199 Augsburg, Germany
T | +49 821 906080
F | +49 821 9060888
E | dr.ehrenstorfer@lgcgroup.com

LGC Labor GmbH is accredited by DAkkS as reference material producer on ISO 17034 (D-RM-19883-01-00).

All characterisation measurements at LGC Labor GmbH are accredited methods to ISO/IEC 17025.

