

# Gravimetric Certificate

Dr. Ehrenstorfer



## Product Identification

20425800 Octachloronaphthalene  
Formula C<sub>10</sub>Cl<sub>8</sub>  
Mol.Weight 403.70  
CAS No. 2234-13-1

## Reference Materials for Residue Analysis

Expiry Date 12.10.2021  
Lot Number 157687AL  
Store at 20°C in the dark

Please note: The expiry date is valid under recommended storage conditions only.

Gravimetric Data		Conc. (mg/l)	Purity %	Weight (mg)
Product Name Octachloronaphthalene		10.000	99.0	3.232
Solvent Information				
Solvent Acetonitrile	Lot No. 115261170	Exact Quantity (ml) 320.00		
Traceability Data				
20425800 117120		neat product		
20425800 157687AL		10.000 mg/l		
Analytical Data				
Detection: GC/ECD		Method Details:		
Column: DB-5, 30 m, ID 0.25 mm		Injector: 320° C		
Inj.-Vol.: 1.00 µl		Start Temperature: 120° C for 4 min		
Flow: 1.0 ml/min		End Temperature: 320° C for 5 min		
Ret.-Time: 17.66 min.		Gradient: 15° C/min		
Identity check RT				
Comment				
The uncertainty/tolerance of this standard is +/- 2.0 %, calculated in accordance with the EURACHEM/CITAC Guide - Quantifying Uncertainty in Analytical Measurement - Second Edition. The uncertainty given is the expanded combined uncertainty and represents an estimated standard deviation equal to the positive square root of the total variance of the uncertainty of components. The expanded uncertainty is U w hich is Uc(y)*K, w here K is the coverage factor at the 95% confidence level (K=2). The expanded uncertainty is based on the combination of uncertainties associated w ith each individual operation involved in the preparation of this product.				

Certified on 12.10.2017

by N. Müller

The Laboratory LGC Labor GmbH is accredited by DAkkS as indicated by the Accreditation Number D-RM-19883-01 & D-PL-19883-01 has shown competence based on ISO Guide 34:2009 with relevant parts of DIN EN ISO/IEC 17025:2005 for production of certified reference materials in form of organic pure substances and in form of single and multi-component solutions organic pure substances.

LGC Labor GmbH · Bgm.-Schlosser-Str. 6 A · 86199 Augsburg · Germany  
Phone +49 821 906080 · Fax +49 821 9060888 · [augsburg.inquiry@lgcgroup.com](mailto:augsburg.inquiry@lgcgroup.com)  
The warranty for this product is limited to the purchasing price of this product.

Data file: 20425800-07-r001.dx

Instrument: ECD

Sample name: 157687AL

Sequence Name: 2017KW41-3a

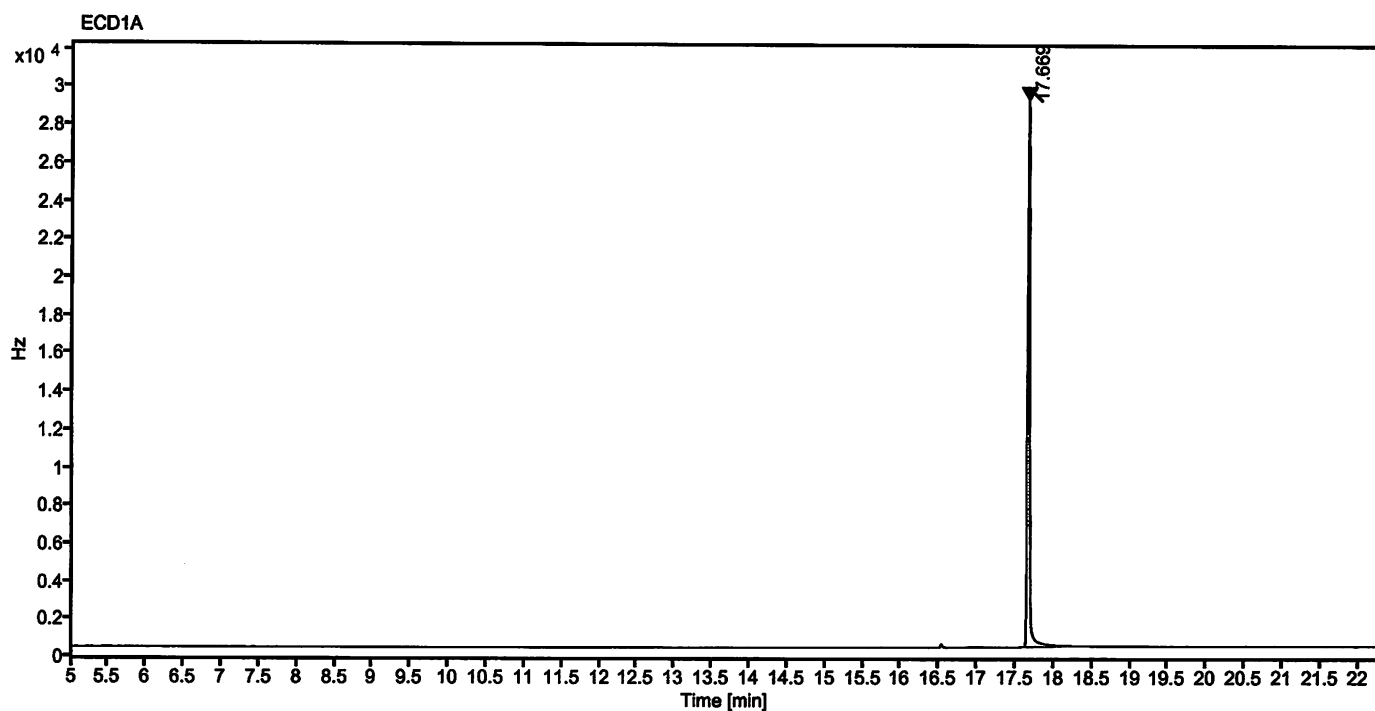
Inj. volume [µl]: 1.0

Injection date: 10/11/2017 6:31:14 PM

Acq. method: pahk.amx

Location: 13

Sample Description Octachloronaphthalene



Signal: ECD1A

Nr.	RT [min]	Area [Hz*s]	Height [Hz]	Area%	Width [min]
1	17.669	56100.27063	28821.77	100.00	0.493
	Sum	56100.27			

Handwritten signature/initials.