

Certificate of Analysis

**EHRENSTORFER™**

Product Identification

17739600 Trichloromethanesulfonyl chloride

CA Methanesulfonylchloride, trichloro-

IUPAC Trichloromethanesulfonyl chloride

Formula CCl₃SCI

Mol.Weight 185.87

CAS No. 594-42-3

Expiry Date 18.09.2024

Lot Number 174679

Store at 20 °C ±4 °C

Please note: The expiry date is valid under recommended storage conditions only.

Toxicological Data



R Code 24/25/26-34

S Code 23-25-36/37-45/46

LD50 (Rats female/male in mg/kg) 82.6

Physical Data

Phase liquid

Color yellowish

Melt.Range

Vapour pressure 104.434 mmHg at 20 °C

Solubility in water NA g/l at °C

Boiling Range (lit.)

Analytical Data

Detection: GC/FID

Column: DB-5, 30 m, ID 0.25 mm

Inj.-Vol.: 1.00 µl

Flow: 1.0 ml/min

Ret.-Time: 9.49 min.

Method Details:

Injector: 200° C

Start Temperature: 40° C for 5 min

End Temperature: 200° C for 16 min

Gradient: 15° C/min

Identity: RT, MS

Comment Purity was determined by chromatographic assay

Water Content

Determined by Karl-Fischer Titration

Det. Purity 99.4 %

Tolerance/Uncertainty +/- 2.0 %

The uncertainty/tolerance of this standard is calculated in accordance with the EURACHEM/CITAC Guide - Quantifying Uncertainty in Analytical Measurement - Second Edition. The uncertainty given is the expanded combined uncertainty and represents an estimated standard deviation equal to the positive square root of the total variance of the uncertainty of components. The expanded uncertainty is U which is $U_c(y) \cdot K$, where K is the coverage factor at the 95% confidence level ($K=2$). The expanded uncertainty is based on the combination of uncertainties associated with each individual operation involved in the preparation of this product.

Certified on 18.09.2018

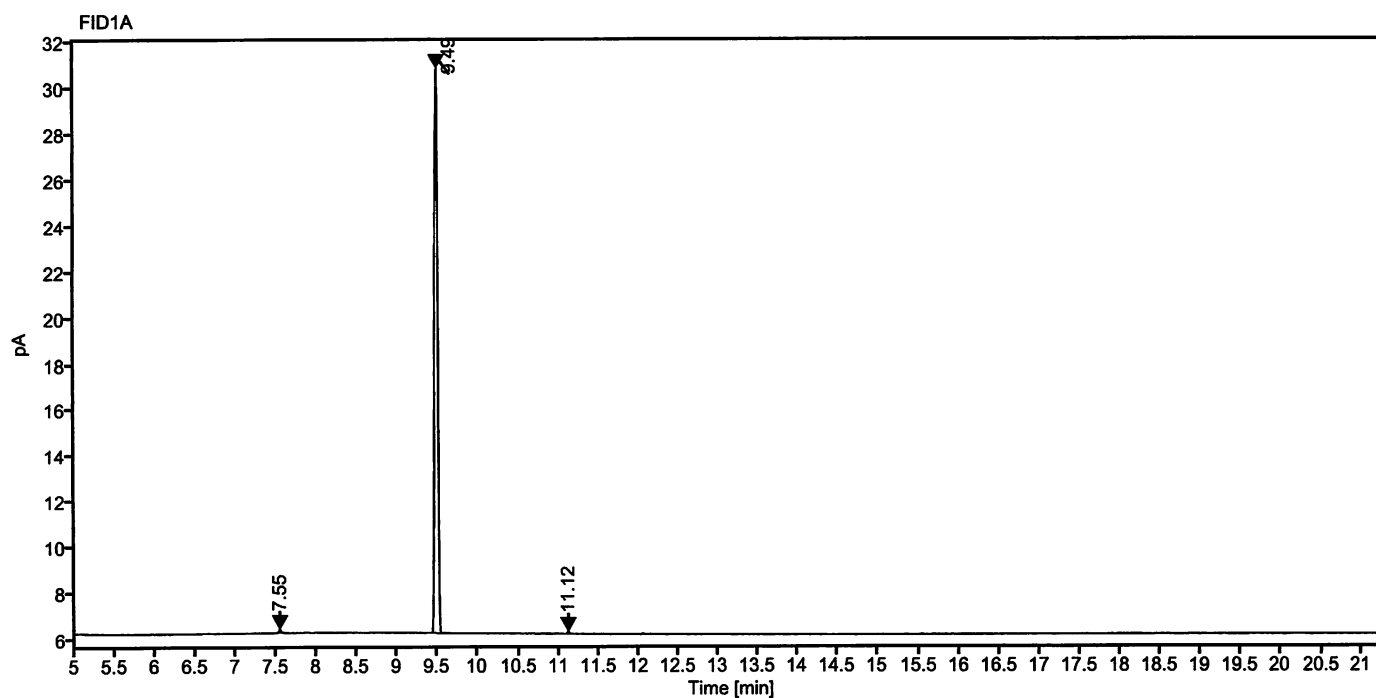
by M. Beck

The Laboratory LGC Labor GmbH is accredited by DAkkS as indicated by the Accreditation Number D-RM-19883-01 & D-PL-19883-01 has shown competence based on ISO Guide 34:2009 with relevant parts of DIN EN ISO/IEC 17025:2005 for production of certified reference materials in form of organic pure substances and in form of single and multi-component solutions organic pure substances.

LGC Labor GmbH · Bgm.-Schlosser-Str. 6 A · 86199 Augsburg · Germany
Phone +49 821 906080 · Fax +49 821 9060888 · augsburg.inquiry@lgcgroup.com
The warranty for this product is limited to the purchasing price of this product.

Data file: 17739600-02-r001.dx **Instrument:** FID 2
Sample name: 80914AL 174679 **Sequence Name:** 2018KW38-0917-a
Inj. volume [µl]: 1.0 **Injection date:** 9/17/2018 3:27:44 PM
Acq. method: 200.amx **Location:** 35

Sample Description Trichloromethanesulfenyl chloride



Signal: FID1A

Nr.	RT [min]	Area [pA*s]	Height [pA]	Area%	Width [min]
1	7.55	0.24789	0.16	0.37	0.024
2	9.49	67.29257	24.60	99.43	0.213
3	11.12	0.13785	0.11	0.20	0.019
	Sum	67.68			

J. Deek