

Certificate of Analysis



Product Identification

11127000 Chloraniformethan

CA Formamide,N-[2,2,2-trichloro-1-[(3,4-dichlorophenyl)amino]ethyl]-

IUPAC N-[2,2,2-trichloro-1-[(3,4-dichlorophenyl)amino]ethyl]-formamide

Formula C₉H₇Cl₅N₂O

Mol.Weight 336.43

CAS No. 20856-57-9

Expiry Date 07.09.2024

Lot Number 174692

Store at 20 °C ±4 °C

Please note: The expiry date is valid under recommended storage conditions only.

Toxicological Data



R Code

S Code

LD50 (Rats female/male in mg/kg) N/A

Physical Data

Phase crystalline solid

Color colourless

Melt.Range 133.7 °C

Vapour pressure N/A at °C

Solubility in water N/A g/l at °C

Boiling Range (lit.)

Analytical Data

Detection: UHPLC/DAD

Column: LUNA Omega C18 1.6 µm 100 x 2.1 mm

Inj.-Vol.: 2.00 µl

Flow: 0.5 ml/min

Ret.-Time: 6.28 min.

Method Details:

Eluent A: WA

Eluent B: Acetonitrile

Time/min	A	B
0	90%	10%
0.3	90%	10%
8	0%	100%
9.5	0%	100%
10	90%	10%

Identity: UV, MS, EA, NMR, RT

Comment Purity was determined by chromatographic assay corrected by water and/or residue solvents.

Water Content 0.2 % Determined by Karl-Fischer Titration

Det. Purity 98.9 % Tolerance/Uncertainty +/- 1.0 %

The uncertainty/tolerance of this standard is calculated in accordance with the EURACHEM/CITAC Guide - Quantifying Uncertainty in Analytical Measurement - Second Edition. The uncertainty given is the expanded combined uncertainty and represents an estimated standard deviation equal to the positive square root of the total variance of the uncertainty of components. The expanded uncertainty is U which is $Uc(y) \cdot K$, where K is the coverage factor at the 95% confidence level (K=2). The expanded uncertainty is based on the combination of uncertainties associated with each individual operation involved in the preparation of this product.

Certified on 07.09.2018

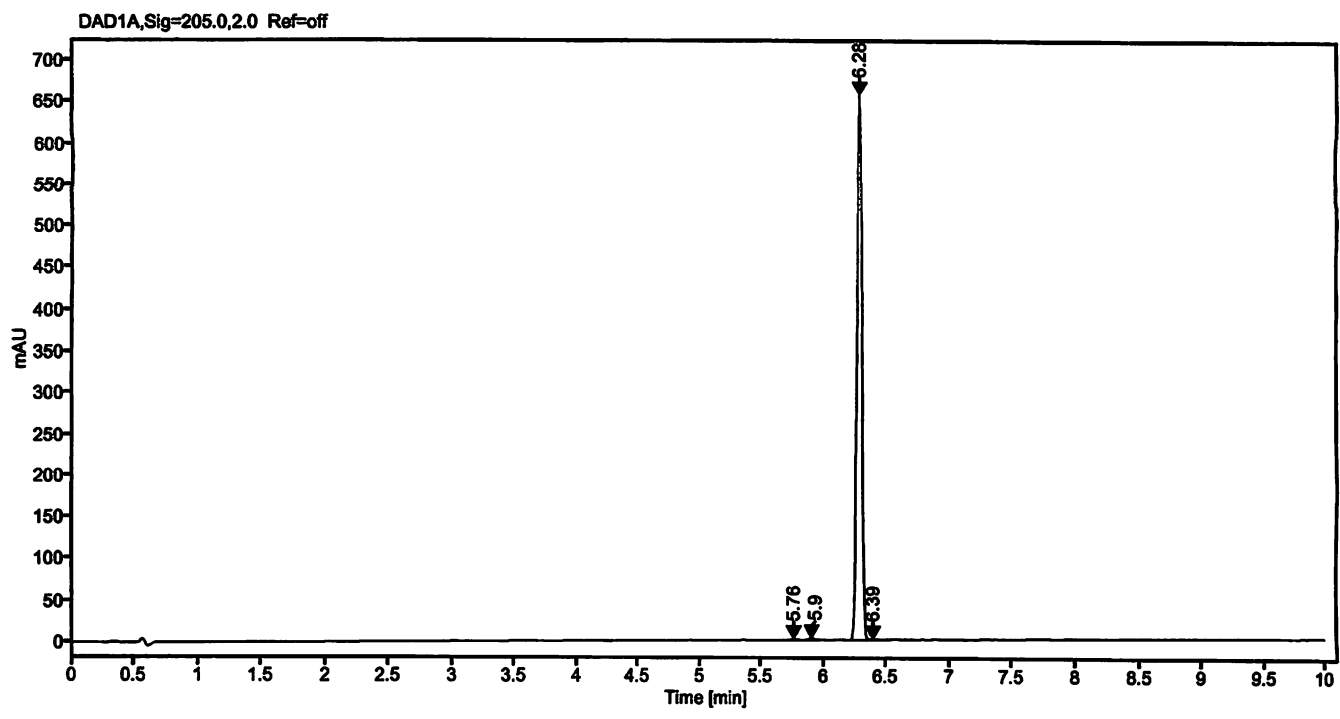
by M. Beck

The Laboratory LGC Labor GmbH is accredited by DAkkS as indicated by the Accreditation Number D-RM-19883-01 & D-PL-19883-01 has shown competence based on ISO Guide 34:2009 with relevant parts of DIN EN ISO/IEC 17025:2005 for production of certified reference materials in form of organic pure substances and in form of single and multi-component solutions organic pure substances.

LGC Labor GmbH · Bgm.-Schlosser-Str. 6 A · 86199 Augsburg · Germany
Phone +49 821 906080 · Fax +49 821 9060888 · augsburg.inquiry@lgcgroup.com
The warranty for this product is limited to the purchasing price of this product.

260715

Data file: 11127000-06-r001.dx Instrument: UHPLC 2
Sample name: 80713AL 174692 Sequence Name: 16072018-2
Inj. volume [µl]: 2.0 Injection date: 7/16/2018 9:00:13 PM
Acq. method: Gradient_10-100.amx Location: P1-A4
Sample Description Chloranifformethan



Signal: DAD1A, Sig=205.0, 2.0 Ref=off

Nr.	RT [min]	Area	Height	Area%
1	5.76	4.74462	1.45	0.26
2	5.90	6.93239	2.32	0.38
3	6.28	1803.38284	655.14	99.22
4	6.39	2.48668	0.66	0.14
	Sum	1817.55		