

CERTIFICATE OF ANALYSIS

Sigma-Aldrich Laborchemikalien GmbH D-30918 Seelze
Telefon: +49 5137 8238-150

Seelze, 22.05.2013/483496/13/09417

Order-No.:

Customer-No.:

Order-Code:

Quantity:

Production Date: 26.Apr.2013

Expiry Date: 26.Apr.2018

Article/Product: 35745

Batch : SZBD116XV

1-Naphtaleneacetic acid PESTANAL®

Reference Material (RM)**1. General Information**

Formula: C₁₂H₁₀O₂

CAS-No.: [86-87-3]

Usage : Herbicide

Molar mass: 186.21 g/Mole

Recomm. storage temp.: roomtemp.

The estimated uncertainty of a single measurement of the assay can be expected to be 1 % relative (confidence level = 95%, n= 6) whereby the assay measurements are calculated by 100% minus found impurities.

2. Batch Analysis

Identity (NMR)

Assay (HPLC)

Water (Karl Fischer)

Melting range

Date of Analysis

complying	
95.6	area %
0.05	%
128.2-130.6	°C
21.May.2013	

3. Advice and Remarks

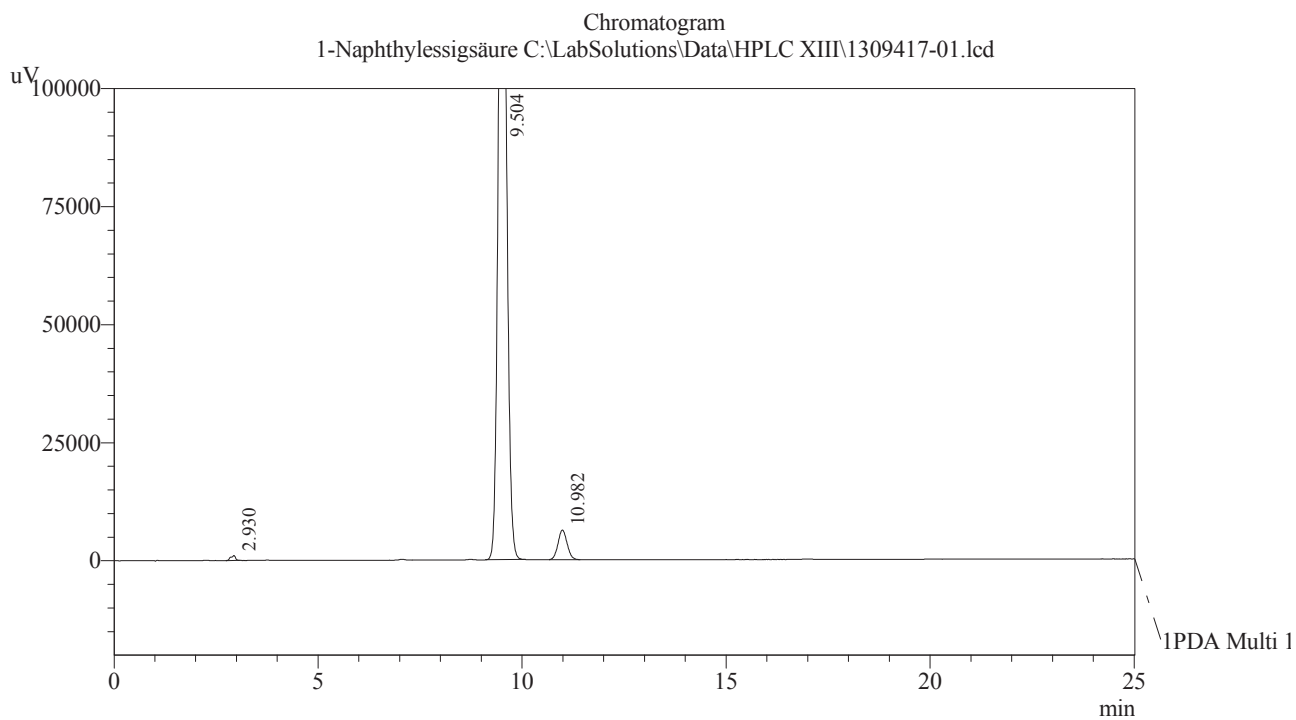
- The expiry date is based on the current knowledge and holds only for proper storage conditions in the originally closed flasks/ packages.
- Whenever the container is opened for removal of aliquot portions of the substance, the person handling the substance must assure, that the integrity of the substance is maintained and proper records of all its handlings are kept. Special care has to be taken to avoid any contamination or adulteration of the substance.
- We herewith confirm that the delivery is effected according to the technical delivery conditions agreed.
- Particular properties of the products or the suitability for a particular area of application are not assured.
- We guarantee a proper quality within our General Conditions of Sales.

Sigma-Aldrich Laborchemikalien GmbH
Quality Management SA-LC

HPLC-Method

Article : 1-Naphthaleneacetic acid
Article-No : 35745
Batch : SZBD116XV

Column : L=150mm, ID=4,6mm; Discovery HS-C18 5µm
Eluent : 30 % Acetonitrile
70 % Water + 0,1% Phosphoric acid
Flow : 1,8ml/min
Detector : UV-255nm
Injection-Volume : 10µl
Sample-Preparation : 0,2mg/ml Eluent
Linearity : checked
Evaluation : Normalisation (uncorrected)
Operator : Schowe



PeakTable

Peak#	Ret. Time	Area	Area %
1	2.930	8547	0.353
2	9.504	2316900	95.643
3	10.982	97010	4.005
Total		2422457	100.000