

Certificate of Analysis

Dr. Ehrenstorfer

Product Identification

20905000 Naphthalene

CA Naphthalene

IUPAC Naphthalene

Formula C₁₀H₈

Mol.Weight 128.17

CAS No. 91-20-3

Reference Materials for Residue Analysis

Expiry Date 15.11.2022

Lot Number 136882

Store at 20 °C ±4 °C

Please note: The expiry date is valid under recommended storage conditions only.

Toxicological Data



R Code 22-40-53

S Code 39-60-61

LD50 (Rats female/male in mg/kg) 490

Physical Data

Phase crystalline solid

Color colourless

Melt.Range 80.3 °C

Vapour pressure 10 Pa at 25 °C

Solubility in water 0.031 g/l at 20 °C

Boiling Range (lit.)

Analytical Data

Detection: HPLC/DAD

Column: ReproSil 100 C18 5µ 250x3

Inj.-Vol.:

Flow: 1.0 ml/min

Ret.-Time: 2.60 min.

Method Details:

Acetonitrile:H₂O 4:1

Identity: UV, RT, MS, IR

Comment Purity was confirmed by external standard method.

Inj.-Vol.: 3µl

Water Content 0.0 % Determined by Karl-Fischer Titration

Det. Purity 99.6 % Tolerance/Uncertainty +/- 0.5 %

The uncertainty/tolerance of this standard is calculated in accordance with the EURACHEM/CITAC Guide - Quantifying Uncertainty in Analytical Measurement - Second Edition. The uncertainty given is the expanded combined uncertainty and represents an estimated standard deviation equal to the positive square root of the total variance of the uncertainty of components. The expanded uncertainty is U which is $U_c(y) \cdot K$, where K is the coverage factor at the 95% confidence level ($K=2$). The expanded uncertainty is based on the combination of uncertainties associated with each individual operation involved in the preparation of this product.

Certified on 24.03.2017

by N. Müller

The Laboratory LGC Labor GmbH is accredited by DAkkS as indicated by the Accreditation Number D-RM-19883-01 & D-PL-19883-01 has shown competence based on ISO Guide 34:2009 with relevant parts of DIN EN ISO/IEC 17025:2005 for production of certified reference materials in form of organic pure substances and in form of single and multi-component solutions organic pure substances.

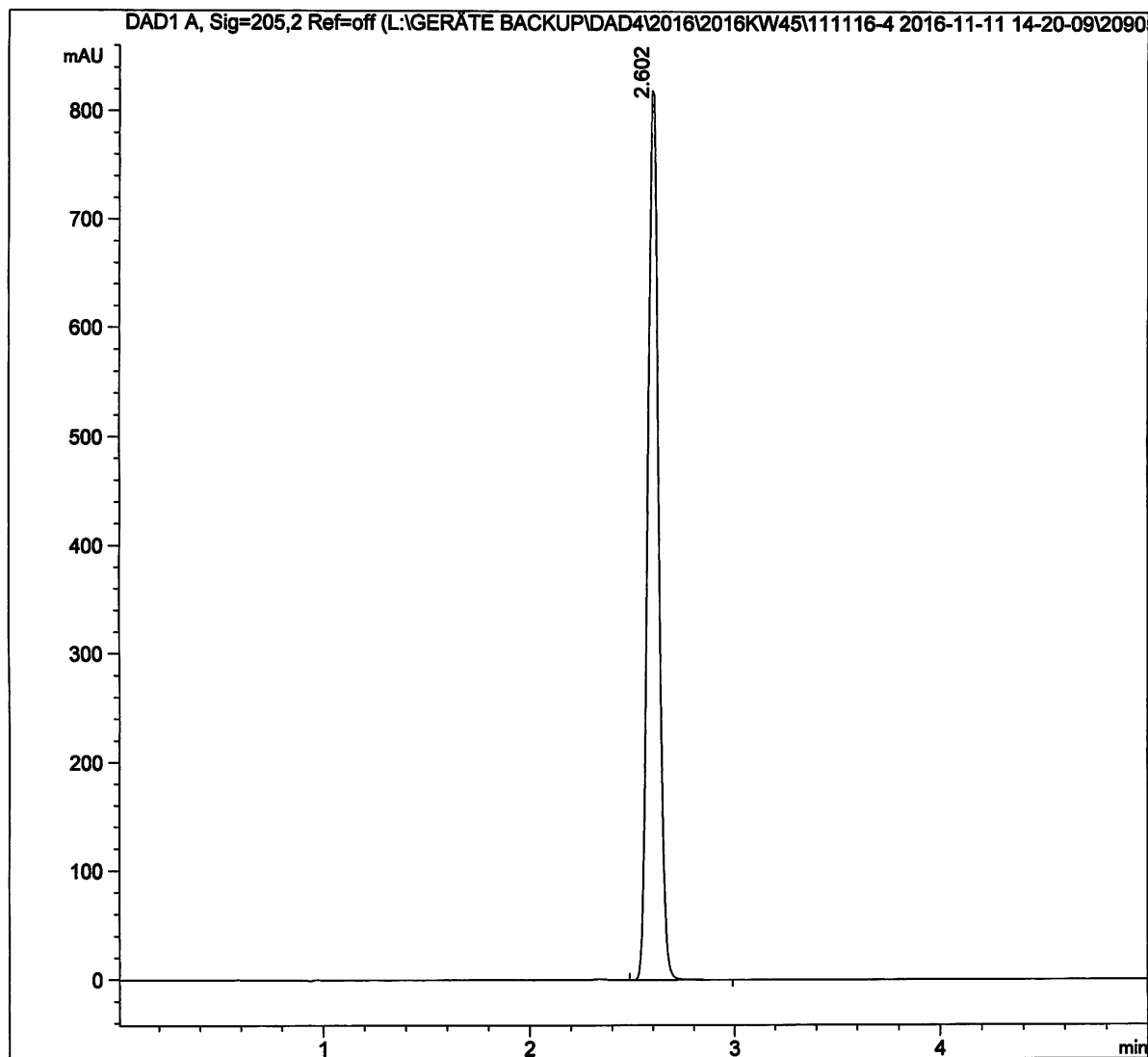
LGC Labor GmbH · Bgm.-Schlosser-Str. 6 A · 86199 Augsburg · Germany
Phone +49 821 906080 · Fax +49 821 9060888 · augsburg.inquiry@lgcgroup.com
The warranty for this product is limited to the purchasing price of this product.

Injection Date : Fri, 11. Nov. 2016 Seq Line : 23
Sample Info : Naphthalene Location : Vial 68
Acq Operator : SYSTEM Inj. No. : 1
Inj. Vol. : 3 µl

24.3.17
K

Acq. Method : C:\Chem32\1\Data\2016KW45\111116-4 2016-11-11 14-20-09\41K.M

Acetonitrile : Water 4:1



Peak #	RT [min]	Width [min]	Area %	Area	Height
1	2.602	0.059	100.000	3.032e3	825.990

*** End of Report ***

Handwritten signature.