

Certificate of Analysis

Dr. Ehrenstorfer



Product Identification

11240100 Chlordimeform HCl
CA N'-(4-chloro-2-methylphenyl)-N,N-dimethylmethanimidamide hydrochloride
IUPAC N2-(4-chloro-o-tolyl)-N1,N1-dimethylformamidine hydrochloride
Formula C10H14Cl2N2
Mol.Weight 233.14
CAS No. 19750-95-9

Reference Materials for Residue Analysis

Expiry Date 20.06.2021
Lot Number 142094
Store at 20 °C ±4 °C

Please note: The expiry date is valid under recommended storage conditions only.

Toxicological Data



R Code 22-40-50/53
S Code 22-36/37-60-61
LD50 (Rats female/male in mg/kg) 225

Physical Data

Phase crystalline solid
Color colourless
Melt.Range dec.210,3 °C
Vapour pressure N/A at °C
Solubility in water >500 g/l at 20 °C
Boiling Range (lit.)

Analytical Data

Detection: HPLC/DAD
Column: ReproSil 100 C18 5µ 250x3
Inj.-Vol.: 10.00 µl
Flow: 1.0 ml/min
Ret.-Time: 1.62 min.

Method Details:
Acetonitrile:H2O+0,5% H3PO4 1:1

Identity: RT, UV, IR, MS, NMR, EA
Comment Purity was confirmed by external standard method.

Water Content 0.3 % Determined by Karl-Fischer Titration
Det. Purity 98.0 % Tolerance/Uncertainty +/- 1.0 %

The uncertainty/tolerance of this standard is calculated in accordance with the EURACHEM/CITAC Guide - Quantifying Uncertainty in Analytical Measurement - Second Edition. The uncertainty given is the expanded combined uncertainty and represents an estimated standard deviation equal to the positive square root of the total variance of the uncertainty of components. The expanded uncertainty is U which is $U_c(y) \cdot K$, where K is the coverage factor at the 95% confidence level (K=2). The expanded uncertainty is based on the combination of uncertainties associated with each individual operation involved in the preparation of this product.

Certified on 20.06.2017
by N. Müller

The Laboratory LGC Labor GmbH is accredited by DAkkS as indicated by the Accreditation Number D-RM-19883-01 & D-PL-19883-01 has shown competence based on ISO Guide 34:2009 with relevant parts of DIN EN ISO/IEC 17025:2005 for production of certified reference materials in form of organic pure substances and in form of single and multi-component solutions organic pure substances.

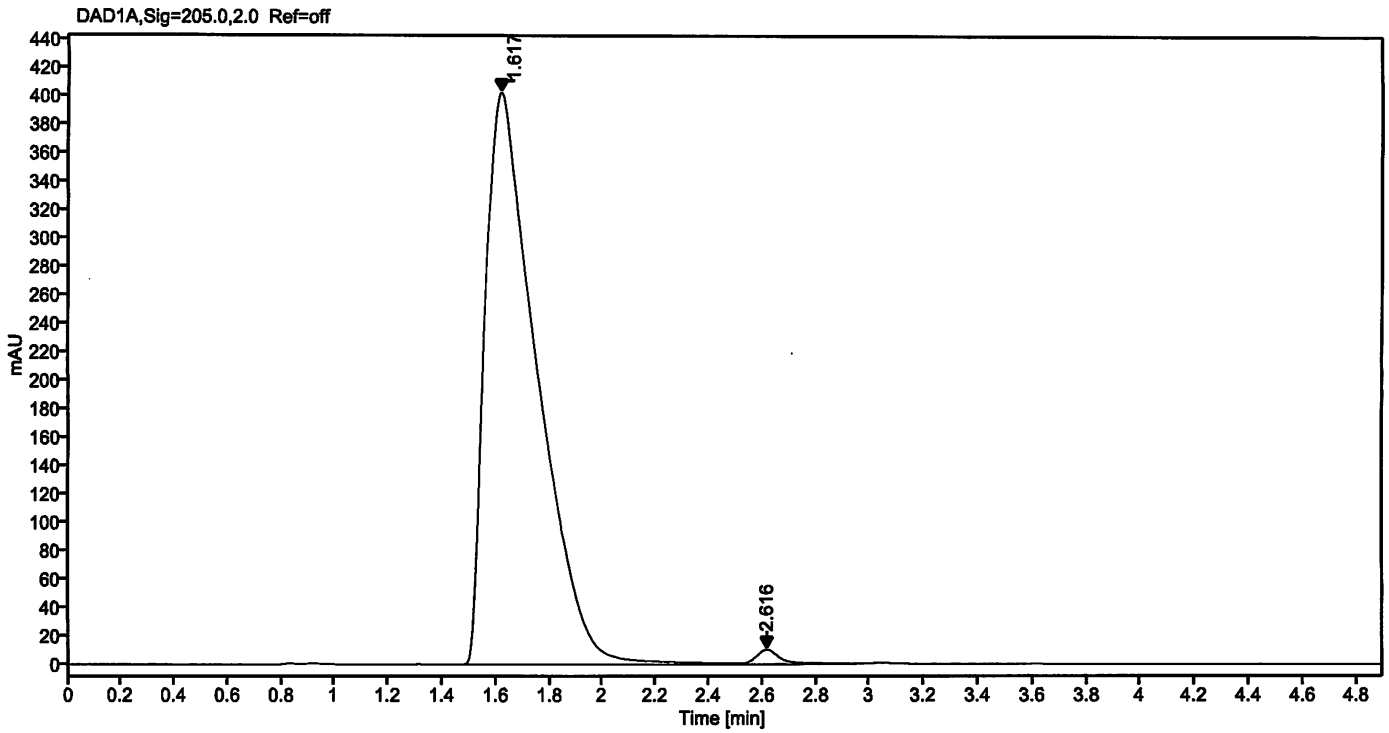
LGC Labor GmbH · Bgm.-Schlosser-Str. 6 A · 86199 Augsburg · Germany
Phone +49 821 906080 · Fax +49 821 9060888 · augsburg.inquiry@lgcgroup.com
The warranty for this product is limited to the purchasing price of this product.

1c

Data file: 11240100-03-r001.dx
Sample name: 70612AL 142094
Inj. volume [µl]: 10.0
Acq. method: 11PK.amx

Instrument: DAD3
Sequence Name: 16062017-2
Injection date: 6/16/2017 6:15:13 PM
Location: 52

Sample Description Chlordimeform HCl



Signal: DAD1A, Sig=205.0, 2.0 Ref=off

Nr.	RT [min]	Area	Height	Area%
1	1.617	5411.48666	404.04	98.71
2	2.616	70.66397	10.32	1.29
	Sum	5482.15		

Handwritten signature or initials.