

Certificate of Analysis



ISO Guide 34 Reference Material

Product Identification

Article Code: DRE-C13650000
Article Name: Flamprop-isopropyl
Formula: C19H19CIFNO3
Mol. Weight: 363.81
CAS No.: 52756-22-6

Lot Number: G737850
Expiry Date: 13.09.2024
Storage Temperature: 20°C ± 4°C

Storage and handling: The RM should be stored in the original sealed bottle at the temperature given above. After use the bottle should be tightly closed and protected from moisture.

Purity: 96.00% (g/g)

Expanded Uncertainty U= 2.00% (g/g)

The uncertainty of this standard is calculated in accordance with the ISO Guide 34 and EURACHEM/CITAC Guide - Quantifying Uncertainty in Analytical Measurement, Second Edition. The expanded uncertainty is $U(\text{exp}) = u(\text{RM}) \times k$, where k is the coverage factor at the 95% confidence level ($k=2$). Uncertainty $u(\text{RM})$ is based on the combination of the uncertainties associated with each individual operation involved in the analysis of the product: $u(\text{RM}) = \sqrt{u(\text{char})^2 + u(\text{bb})^2 + u(\text{Its})^2 + u(\text{sts})^2}$; $u(\text{char})$ is the uncertainty of characterisation; $u(\text{bb})$ uncertainty of homogeneity test; $u(\text{Its})$ uncertainty of stability test long-term; $u(\text{sts})$ uncertainty of stability test short-term. $u(\text{Its})$ and $u(\text{sts})$ are not included in the calculation as the stability statement is based on real evidence opposed to simulation.

Minimum sample: 1 mg is recommended as the minimal sample amount. If less material is used, it is recommended to increase the certified uncertainty by a factor of two for half sample and a factor of four for a quarter of sample.

Intended use: Use this RM as calibrant for chromatography or any other analytical technique.

Analytical Data

Traceability of chromatography: To the International System of Units (SI).

Instrument:	GC/FID	Injector:	280°C
Detection:	FID	Initial Temp:	60°C for 5 min
Column:	Optima-5MS, 0.25 µm, 0.25 mm	End Temp:	280°C for 1 min
Inj.-Vol.:	1 µl	Gradient:	15°C/min
Flow:	1.0 ml/min		
Ret.Time:	19.70 min		

Comment

Traceability: The balances used are calibrated with weights traceable to the national standards (DKD).

Calibrated class A glassware is used for volumetric measurements.

Water Content: <0.10% (g/g) by Karl-Fischer-Titration ($U(\text{exp}) = 0.03\%$ (g/g)).

Identity: EA, NMR, RT, IR, UV, MS

Attachment: Exemplary chromatogram of given method

Certificate Revision 1 - 13.09.2018 - M. Beck

Certified on: 13.09.2018
Certified by: M. Beck
RM Release

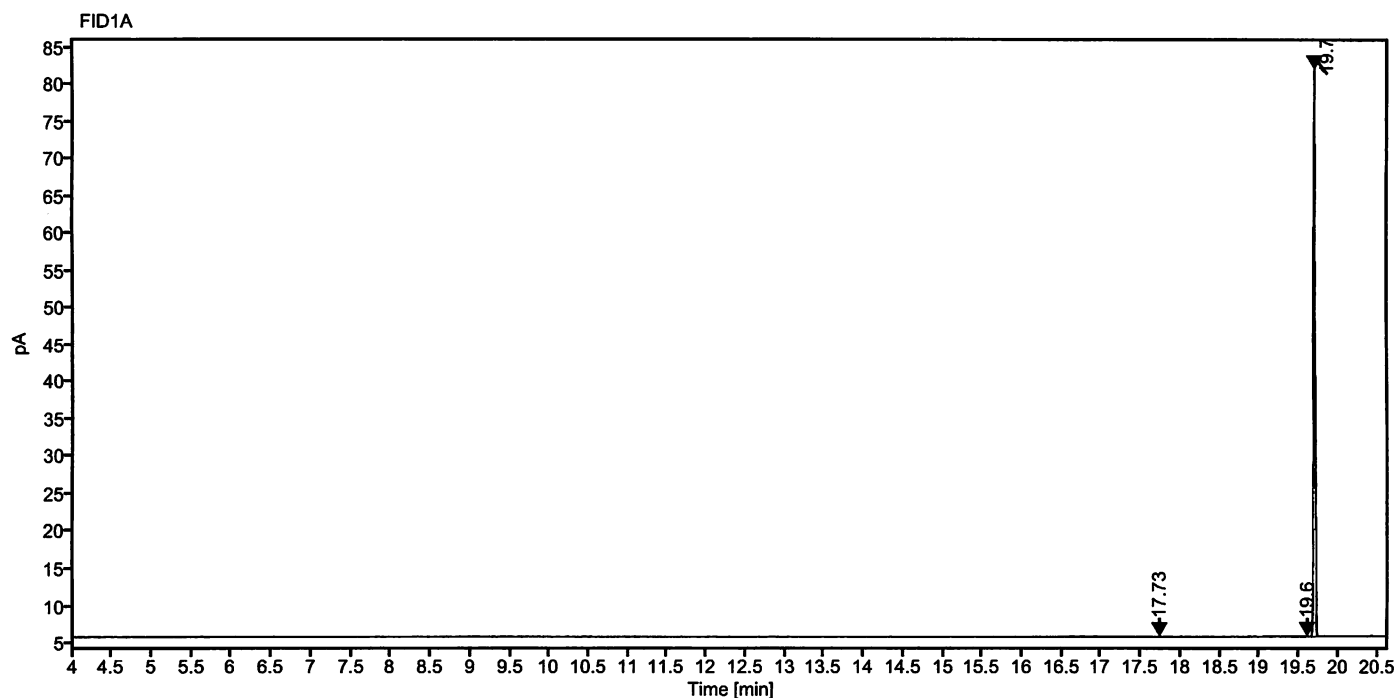
The LGC Labor GmbH, accredited by DAkkS as indicated by the accreditation number D-RM-19883-01 & D-PL-19883-01, has shown competence based on ISO Guide 34:2009 with relevant parts of DIN EN ISO/IEC 17025:2005 for production of certified reference materials in form of organic pure substances and in form of single and multi-component solutions of organic pure substances.

LGC Labor GmbH - Bgm.-Schlosser-Straße 6A - 86199 Augsburg - Germany
Phone +49 821 906080 - Fax +49 821 9060888 - augsburg.inquiry@lgcgroup.com
The warranty for this product is limited to the purchasing price of this product.

18-05-2018

Data file: 13650000-30.dx Instrument: FID 3
Sample name: 80417CY G737850 Sequence Name: 2018KW16-0420-a
Inj. volume [µl]: 1.0 Injection date: 4/21/2018 4:10:26 AM
Acq. method: pesk.amx Location: 33

Sample Description Flamprop-isopropyl



Signal: FID1A

Nr.	RT [min]	Area [pA*s]	Height [pA]	Area%	Width [min]
1	17.73	0.12535	0.08	0.11	0.020
2	19.60	0.11272	0.07	0.10	0.021
3	19.70	110.26123	76.17	99.78	0.126
	Sum	110.50			